



SCE1350A

Crawler Crane 135 Tons Lifting Capacity

Quality Changes the World



- Max. lifting moment: $95 \times 7 = 668 \text{t} \cdot \text{m}$**
- Max. boom length: 76m**
- Max. fixed jib combination: 61m+31m**
- Max. luffing jib combination: 49m+52m**

The parameters, pictures and standard/optional equipment are only for reference in this brochure, the actual machine is based on the effective price list and contract.



Crawler Crane Series
SCE1350A

P03

Main
Characteristics

- Product Specification
- Safety Device

P09

Technical
Parameters

- Major Performance & Specifications
- Outline Dimension
- Transport Dimension
- Transport Plan

P19

Configurations

- H Configuration
- Hh Configuration
- FJ Configuration
- LJ Configuration



SCE1350A
SANY CRAWLER CRANE
135 TONS LIFTING CAPACITY

QUALITY CHANGES THE WORLD

Main Characteristics

- Page 04 Product Specification
- Page 07 Safety Device



Product Specification



Engine

- Model: Cummins QSL9-C325 Diesel engine.
- Type: 4-stroke, water-cooled, vertical in-line 6 cylinders, direct injection, turbo-charger, intercooler, complied with european off-highway Stage V emission standard and US EPA Tier F4(f) emission standard.
- Displacement: 8.9L.
- Rated power: 242kW/1800rpm.
- Operation power: 242kW/1800rpm.
- Max. Torque: 1527N·m/1400rpm.
- Starter: 24V-6.0kW.
- Radiator: Fin type aluminum plate core.
- Air cleaner: Dry type system with main filter element, safety element and resistance indicator.
- Throttle: Grip type hand throttle, electrically-controlled.
- Fuel filter: Replaceable paper element.
- Batteries: Two 12V×180Ah capacity batteries, connected in series.
- Fuel tank capacity: 400L.

Hydraulic system

- Main pumps: Three open variable displacement piston pumps are adopted to provide oil supply for main actuators of main machine.
- Gear pump: Two types of gear pump for radiator and control circuit.
- Control: Main pump adopts electrically-controlled positive flow control; winch motor adopts limitless adjustable piston motor of variable displacement. The operating components are two cross-shaped hydraulic handles and a dual- travel-pedal control valve, to control various actuators proportionally.
- Way of cooling: Heat exchanger, fan core and multi-stage cooling.
- Filter: Large flow, high accuracy filter, with bypass valve and indicator, which can remind the user to replace the filter element in time.
- Max. pressure of system: 32MPa.
- Main/aux. hoist and travel system: 32MPa.
- Swing system: 32MPa.
- Control system: 5MPa.
- Hydraulic tank capacity: 460L.

Electrical control system

- Self-developed SYIC-III integrated control system is adopted with higher integration, precise operation and reliable quality.
- Control system consists of power system, engine system, main control system, LMI system, auxiliary system and safety monitoring system. CAN BUS is used for data communication between controller, monitor and the engine.
- Monitor: The working parameters and status are shown on the monitor, such as the engine speed, fuel volume, engine oil pressure, servo pressure, engine working hours, lifting conditions and boom angle.

Main and aux. hoist mechanism

- Main and aux. hoist winches are driven separately by motor via gearbox. Operating winch handle can control the winch to rotate to two directions, which are lifting and lowering of hook. Excellent inching function is equipped on the machine.
- Drums with fold-line grooves can ensure the wire rope reeved in order in multilayers.

Main hoist/aux. hoist with free fall function:

| | | |
|-------------------------|-----------------------------|------------|
| Main hoisting mechanism | Drum diameter | 576mm |
| | Rope speed (1st layer) | 0~121m/min |
| | Wire rope diameter | 26mm |
| | Main hoist wire rope length | 300m |
| | Rated single line pull | 12t |
| Aux. hoisting mechanism | Drum diameter | 576mm |
| | Rope speed (1st layer) | 0~121m/min |
| | Wire rope diameter | 26mm |
| | Aux. hoist wire rope length | 260m |
| | Rated single line pull | 12t |

Main hoist/aux. hoist without free fall function:

| | | |
|-------------------------|-----------------------------|------------|
| Main hoisting mechanism | Drum diameter | 630mm |
| | Rope speed (1st layer) | 0~121m/min |
| | Wire rope diameter | 26mm |
| | Main hoist wire rope length | 300m |
| | Rated single line pull | 12t |
| Aux. hoisting mechanism | Drum diameter | 630mm |
| | Rope speed (1st layer) | 0~121m/min |
| | Wire rope diameter | 26mm |
| | Aux. hoist wire rope length | 260m |
| | Rated single line pull | 12t |



Product Specification

Boom hoist mechanism

- Boom hoist winch is driven directly by motor via gearbox. Operating winch handle can control the winch to rotate to two directions, which are lifting and lowering of boom.
- Drums with fold-line grooves can ensure the wire rope reeved in order in multilayers.

| | | |
|----------------------|-----------------------------|-----------|
| Boom hoist mechanism | Drum diameter | 420mm |
| | Rope speed (1st layer) | 0~45m/min |
| | Diameter of wire rope | 20mm |
| | Boom hoist wire rope length | 190m |

Swing mechanism

- Swing brake adopts wet, spring loaded, normally-closed brake, and braking through spring force.
- Swing system has three work modes to accommodate different needs. It is featured in small backlash, steady control, and excellent inching function. It also has free slipping function to avoid sudden braking.
- Swing drive: External engaged swing drive with 360° swing range, and the max. swing speed is 2.2r/min. The max. drive pressure can reach 32MPa.
- Swing ring: Three-row roller bearing.

Cab and control

- Novelty in cab design, artistic modeling and trim and large area glass window; fitted with low beam headlamp and rearview mirror to broaden horizon; installed with air conditioner and radio; the arrangement of seats, control handle and various control buttons is ergonomically designed to enable more conformable operation.
- Cab layout: Integrated touch screen of 10.4 inch, programmable smart buttons vibration handles are offered as optional and man-machine interaction interface are more perfect.
- Armrest box: Operation handle, electrical switch, emergency stop switch and ignition switch are installed on the left and right armrest boxes. The armrest box can be adjusted with the seat.
- Seat: Suspension type multi-mode multi-level regulated seat, fitted with unloading switch.
- Air conditioner: Cooling and heating air, optimized air passage and air port.
- Multiple cameras can be presented on the monitor at the same time to realize real-time monitoring of wire rope on each winch, conditions behind the counterweight and surrounding the machine.

Counterweight

- The stacking mode of counterweight tray and blocks is used for easy assembly, disassembly and transportation.
- Rear counterweight: total weight 54t, 5.25t counterweight blocks ×8, 12t counterweight tray ×1.
- Carbody counterweight: A total of 2, total weight of 20t (10t×2).
- Rear counterweight self-assembly device is offered as optional.

Upperworks

- High-strength steel weld framework, with no torsion or deformation. The parts are laid out in the way that is easier for maintenance and service.

Product Specification



Lowerworks

- Independent travel driving units are adopted for each side of the crawler, to realize straight walking and turning driven by travel motor through gearbox and drive wheel.

Crawler tightening

- The track assembly is tensited by beating butter. In the working state, the spring provides buffer function to reduce the instant impact on the track and effectively avoid the track plate derailment and damage phenomenon.

Track pad

- High strength chain rail flat track plate developed specifically for the European market.
- They are 950mm wide with a quantity of 73 pads×2.

Operating equipment

- All chords are high-strength steel tubes, and the boom/jib top sheaves are made of high-strength anti-wearing Nylon material protecting wire rope. The hooks are installed with milled welded steel sheave.

Boom

- Lattice structure. The chord adopts high-strength structural tube and each section is connected through pins.
- Basic boom: 8m boom base+8m boom top.
- Boom insert: 3m×1, 6m×2, 9m×5.
- Boom length: 16m~76m.

Fixed jib

- Lattice structure. The chord adopts high-strength structural tube and each section is connected through pins.
- Basic jib: 5m jib base+3m insert +5m jib top.
- Jib insert: 6m×3.
- Fixed jib length: 13m~31m.
- Longest boom + jib: 61m+31m.

Luffing jib

- Lattice structure. The chord adopts high-strength structural tube and each section is connected through pins.
- Basic jib: 6.5m jib base + 9m insert + 6.5m jib top.
- Jib insert: 3m×2, 6m×1, 9m×2.
- Luffing jib length: 22m~52m.
- Longest boom + jib: 49m+52m.

Extension jib

- The welding structure is connected with main boom through hinge pin, and used for aux. hook operation.
- Length of extension jib: 2.7m.

Hook block

- 135t hook, 5 pulleys.
- 80t hook, 3 pulleys.
- 35t hook, 1 pulley.
- 13.5t ball hook.



Safety Device

Assembly/work mode control switch

- Under the assembly mode, over-hoist limit switch, crane boom limit device and load moment limiter do not work, so as to facilitate the installation of crane.
- All safety limit devices work in the work mode.

Emergency stop

- In emergent situation, this button is pressed down to cut off the power supply of whole machine and all actions stop.

Load moment limiter (LMI)

- It is an independent computerized safety control system. LMI can automatically detect the load weight, work radius and boom angle, and present on the display the rated load, actual load, work radius and boom angle. In normal operation, the LML can make a judgment and cut off automatically if the crane moves towards dangerous direction. It can also perform as a black box to record the lifting information.
- It is composed of monitor, angle sensor and force sensor and other parts.

Over-hoist limit switch of main/auxiliary hooks

- Over-hoist protection device comprises of limit switch and weight on boom top, which prevents the hook lifting up too much.
- When the hook lifts up to the limit height, the limit switch activates, buzzer on the left control panel sends alarm, failure indicator light starts to flash, and the hook hoisting action is cut off automatically, cut off automatically.

Over-release limit switch of main/auxiliary hooks

- It is comprised of activator in the drum and proximity switch to prevent over release of wire rope. When the rope is paid out close to the last three wraps, the limit switch acts, and the system sends alarm through buzzer and show the alarm on the instrument panel, automatically cutting off the winch action.

Function lock lever

- If the function lock level is not in work position, all the other handles won't work, which prevents any mis-operation caused by accidental collision.

Boom hoist drum lock

- Pawl lock is used on boom hoist winch, which needs to unlock by switch before operation, in order to prevent mis-operation of handles and ensure safety during nonwork time.

Swing lock device

- Swing Lock can lock the machine at four positions, front and back, left and right.

Boom limit device

- When the boom elevation angle reaches the max. set limit, the buzzer sounds and boom action cut off. This protection is two-stage control ensured by both LML system and travel switch.

Back-stop device

- Its major components are nesting tubes and spring, in order to buffer the boom backlash and prevent further tipping back.

Boom angle indicator

- Pendulum angle indicator is fixed on the side of boom base close to the cab, so as to provide convenience to the operator.

Hook latch

- The hook is provided with a baffle to prevent wire rope from falling off.

Safety Device



Monitoring system

- Remote Monitoring system is a standardized offering to provide functions like GPS locating, GPRS data transfer, machine status inquiry and statistics, operating data monitoring and analysis, remote diagnosis of failures.

Zoom camera

- It can monitor load lifting on the main hook and the surroundings at real time. The camera can zoom in/out as needed.
- Components: Wireless remote transmitter, wireless remote receiver, zoom camera.

Tri-color load indicator

- The load indication light has three colors, green, yellow and red, and the real time load status is presented on the display. When the actual load is smaller than 90% of rated load, the green light is on.
- When the actual load is larger than 90% and smaller than 100%, the yellow light is on, the alarm light flashes and sends out intermittent sirens.
- When the actual load reaches 100% of rated load, the red light is on, the alarm light flashes and sends out continuous sirens.
- When the actual load reaches 102% of rated load, the system will automatically cut off the crane operation in dangerous trend.

Audio-visual alarm

- When the engine is working, the light flashes; when the machine is traveling or swinging, it sends out sirens.

Swing indicator light

- The swing indicator light flashes during traveling or swing.

Illuminating light

- The machine is equipped with the low beam light and high beam light at the front of the cab, illumination light at cab, and other night lights, boom lights to improve the visibility during construction.

Camera

- Set on the handrail at the front of right sheet metal, so as to monitor the rear part of machine.

Pharos

- Pharos is mounted on the top of boom/jib to indicate the height.

Anemometer

- It is mounted on the top of boom/jib, and displayed on the monitor in the cab.

Electronic level indicator

- It displays the tipping angle of crane on the monitor in real time, protecting the machine from dangerous situation.

Seat interlock

- Put down the function lock lever on the left side of cab seat or if the operator leaves the seat, all control levers will be deactivated to prevent any mis-operation due to accidental collision.

Engine power limit load adjustment and stalling protection

- The controller monitors the engine power to prevent engine getting stuck and stalling.

Engine status monitoring

- The engine status will be presented, such as engine coolant temperature, fuel volume, total work hours, engine oil pressure, engine speed, battery charging, voltage.



SCE1350A
SANY CRAWLER CRANE
135 TONS LIFTING CAPACITY

QUALITY CHANGES THE WORLD

Technical Parameters

- Page 10 Major Performance Specifications
- Page 11 Outline Dimension
- Page 12 Transport Dimension
- Page 17 Transportation Plan

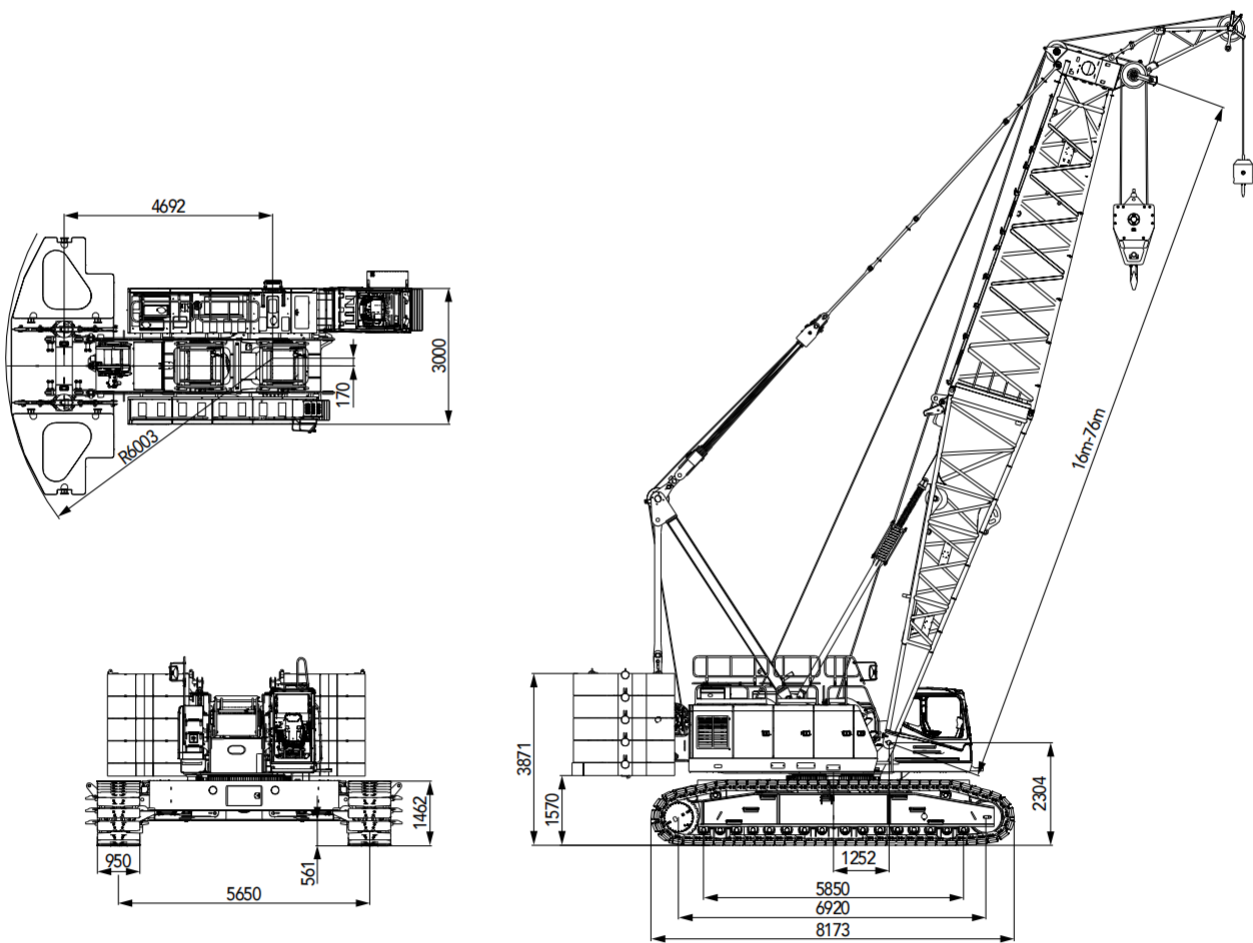


Major Performance Specifications

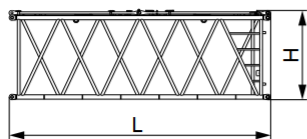
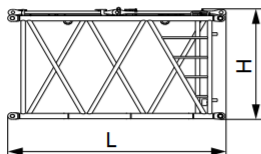
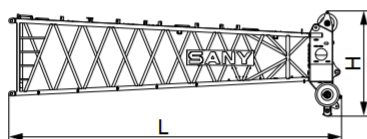
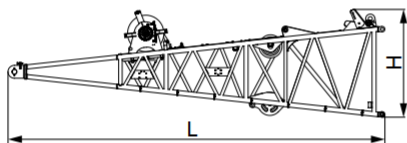
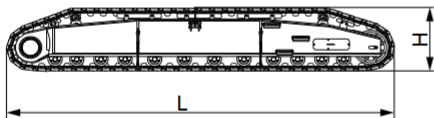
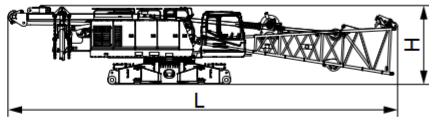
| Major Performance & Specifications of SCE1350A | | | |
|--|--|-------|-----------------|
| Performance Indicators | | Unit | Parameter |
| Boom configuration | Maximum rated lifting capacity | t | 135 |
| | Maximum rated lifting moment | t·m | 668 (=95.4×7) |
| | Boom length | m | 16~76 |
| Fixed jib configuration | Maximum rated lifting capacity | t | 27 |
| | Jib length | m | 13~31 |
| | Longest main boom + jib | m | 61+31 |
| Luffing jib configuration | Maximum rated lifting capacity | t | 40 |
| | Jib length | m | 22~52 |
| | Longest main boom + jib | m | 49+52 |
| Operation speed | Rope speed of main/aux. hoist (1st layer) | m/min | 0~121 |
| | Boom hoist winch rope speed (1st layer) | m/min | 0~45 |
| | Slewing speed | rpm | 0~2.2 |
| | Travelling speed | km/h | 0~1.3 |
| Engine | Output power | kW | 242 |
| | Rated speed | rpm | 1800 |
| Transport parameter | Weight of machine with basic boom (including basic boom, extension jib, jib luffing winch, 135t hook and 13.5t hook) | t | 149.34 |
| | Maximum transport weight of basic machine (including base) | t | 40 |
| | Maximum transport dimension of basic machine (L×W×H, mm) | mm | 16050×3000×3250 |
| Other parameters | Average ground bearing pressure | MPa | 0.112 |
| | Grade ability | % | 30 |

mm

Outline Dimension



Transportation Dimensions



Basic machine (with boom base and jib luffing winch)

×1

| | |
|------------|--------|
| Length (L) | 16.05m |
| Width (W) | 3.00m |
| Height (H) | 3.25m |
| Weight | 40.0t |

Note: the weight of jib luffing winch and wire rope is 1.88t

Crawler assembly

×2

| | |
|------------|--------|
| Length (L) | 8.10m |
| Width (W) | 1.46m |
| Height (H) | 1.33m |
| Weight | 17.78t |

Boom base (with jib luffing winch)

×1

| | |
|------------|-------|
| Length (L) | 8.21m |
| Width (W) | 2.08m |
| Height (H) | 2.24m |
| Weight | 5.78t |

Note: the weight of jib luffing winch and wire rope is 1.88t

Boom top

×1

| | |
|------------|-------|
| Length (L) | 8.42m |
| Width (W) | 1.96m |
| Height (H) | 2.66m |
| Weight | 2.55t |

3m insert of main boom

×1

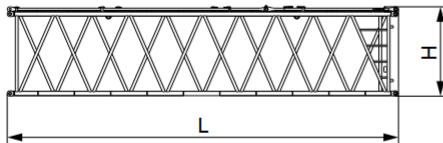
| | |
|------------|-------|
| Length (L) | 3.15m |
| Width (W) | 2.06m |
| Height (H) | 2.09m |
| Weight | 0.62t |

6m insert of main boom

×2

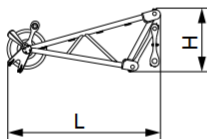
| | |
|------------|-------|
| Length (L) | 6.14m |
| Width (W) | 2.06m |
| Height (H) | 2.08m |
| Weight | 1.04t |

Transportation Dimensions



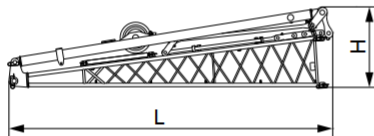
9m insert of main boom ×5

| | |
|------------|-------|
| Length (L) | 9.14m |
| Width (W) | 2.06m |
| Height (H) | 2.08m |
| Weight | 1.49t |



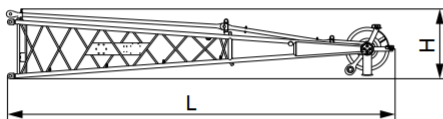
Extension jib ×1

| | |
|------------|-------|
| Length (L) | 2.36m |
| Width (W) | 1.04m |
| Height (H) | 0.98m |
| Weight | 0.3t |



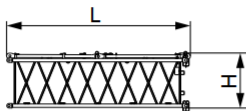
Fixed jib base(including strut) ×1

| | |
|------------|-------|
| Length (L) | 5.25m |
| Width (W) | 1.19m |
| Height (H) | 1.30m |
| Weight | 0.84t |



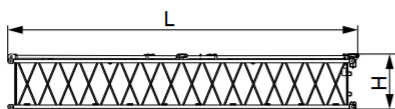
Fixed jib top ×1

| | |
|------------|-------|
| Length (L) | 5.43m |
| Width (W) | 1.01m |
| Height (H) | 0.99m |
| Weight | 0.53t |



3m insert of fixed jib ×1

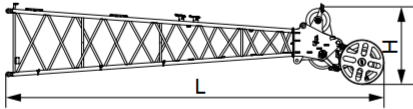
| | |
|------------|-------|
| Length (L) | 3.12m |
| Width (W) | 1.02m |
| Height (H) | 0.92m |
| Weight | 0.19t |



6m insert of fixed jib ×3

| | |
|------------|-------|
| Length (L) | 6.12m |
| Width (W) | 1.02m |
| Height (H) | 0.92m |
| Weight | 0.34t |

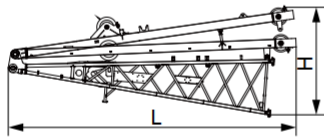
Transportation Dimensions



Luffing jib top

×1

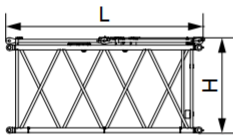
| | |
|------------|-------|
| Length (L) | 7.81m |
| Width (W) | 1.38m |
| Height (H) | 1.45m |
| Weight | 1.17t |



Luffing jib base (with struts)

×1

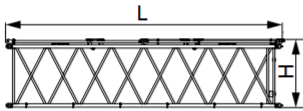
| | |
|------------|-------|
| Length (L) | 7.26m |
| Width (W) | 1.87m |
| Height (H) | 2.70m |
| Weight | 3.13t |



3m luffing jib insert

×2

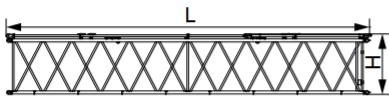
| | |
|------------|-------|
| Length (L) | 3.10m |
| Width (W) | 1.40m |
| Height (H) | 1.50m |
| Weight | 0.3t |



6m luffing jib insert

×1

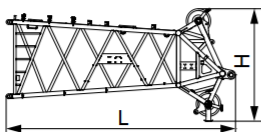
| | |
|------------|-------|
| Length (L) | 6.10m |
| Width (W) | 1.40m |
| Height (H) | 1.50m |
| Weight | 0.49t |



9m luffing jib insert

×3

| | |
|------------|-------|
| Length (L) | 9.10m |
| Width (W) | 1.40m |
| Height (H) | 1.60m |
| Weight | 0.7t |

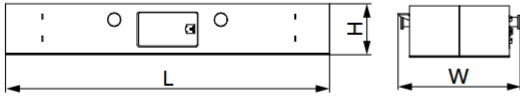


Boom top (special for LJ)

×1

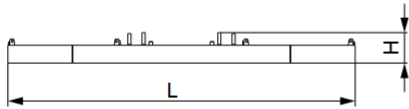
| | |
|------------|-------|
| Length (L) | 5.70m |
| Width (W) | 1.95m |
| Height (H) | 2.80m |
| Weight | 1.9t |

Transportation Dimensions



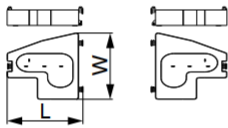
Carbody counterweight ×2

| | |
|------------|-------|
| Length (L) | 4.26m |
| Width (W) | 1.57m |
| Height (H) | 0.67m |
| Weight | 10.0t |



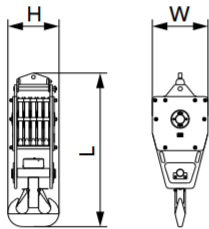
Rear counterweight tray ×1

| | |
|------------|-------|
| Length (L) | 5.80m |
| Width (W) | 2.31m |
| Height (H) | 0.50m |
| Weight | 12.0t |



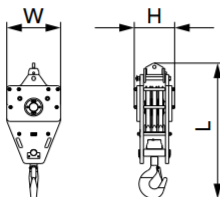
Rear counterweight (1+1)×4

| | |
|------------|-------|
| Length (L) | 1.93m |
| Width (W) | 2.28m |
| Height (H) | 0.60m |
| Weight | 5.25t |



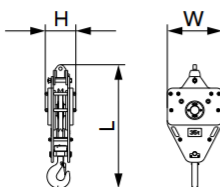
135t lifting hook ×1

| | |
|------------|-------|
| Length (L) | 2.28m |
| Width (W) | 0.91m |
| Height (H) | 0.69m |
| Weight | 2.04t |



80t lifting hook ×1

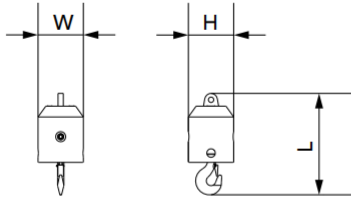
| | |
|------------|-------|
| Length (L) | 2.21m |
| Width (W) | 0.91m |
| Height (H) | 0.62m |
| Weight | 1.94t |



35t lifting hook ×1

| | |
|------------|-------|
| Length (L) | 1.88m |
| Width (W) | 0.91m |
| Height (H) | 0.46m |
| Weight | 1.2t |

Transportation Dimensions



13.5t ball hook

×1

| | |
|------------|-------|
| Length (L) | 0.95m |
| Width (W) | 0.43m |
| Height (H) | 0.43m |
| Weight | 0.45t |

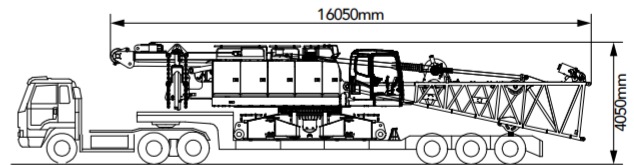
Remarks:

- 1.The transport dimensions for the parts are for reference that do not draw to the scale. The dimensions listed above are design values excluding packing.
- 2.Weight is design values. It may be different due to manufacturing tolerances.

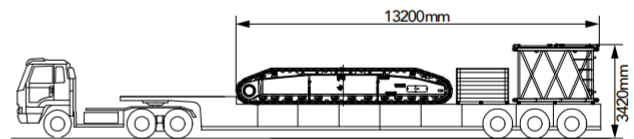
Transport Plan

Transport

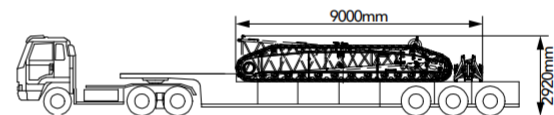
| | |
|---------------------|---|
| Transport cart 1 | |
| Components included | <ul style="list-style-type: none"> Basic machine (4 winches, carbody, outrigger, A-frame, all wire ropes), boom base |
| Transport weight | <ul style="list-style-type: none"> 40t |



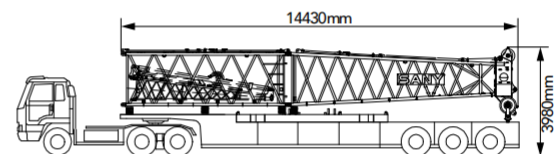
| | |
|---------------------|--|
| Transport cart 2 | |
| Components included | <ul style="list-style-type: none"> Crawler frame: 17.78t 3m boom insert: 0.62t Packing case: 1t |
| Transport weight | <ul style="list-style-type: none"> 19.4t |



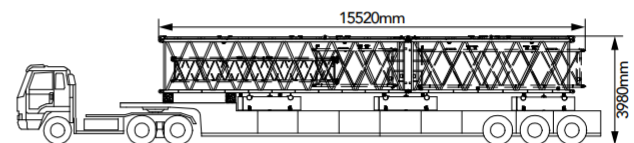
| | |
|---------------------|--|
| Transport cart 3 | |
| Components included | <ul style="list-style-type: none"> Crawler frame: 17.78t Luffing jib top: 1.17t Extension jib: 0.3t |
| Transport weight | <ul style="list-style-type: none"> 19.25t |



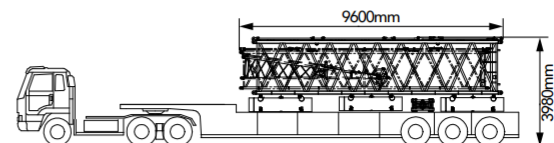
| | |
|---------------------|--|
| Transport cart 4 | |
| Components included | <ul style="list-style-type: none"> Counterweight tray: 12t Boom top: 2.55t 6m boom insert & Fixed jib base: 1.88t |
| Transport weight | <ul style="list-style-type: none"> 16.43t |



| | |
|---------------------|---|
| Transport cart 5 | |
| Components included | <ul style="list-style-type: none"> Counterweight×3: 15.75t 9m boom insert & 3m luffing jib insert & 6m fixed jib insert: 2.13t 6m boom insert & 6m luffing jib insert: 1.53t |
| Transport weight | <ul style="list-style-type: none"> 19.41t |

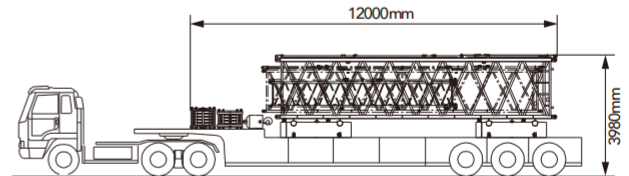


| | |
|---------------------|--|
| Transport cart 6 | |
| Components included | <ul style="list-style-type: none"> Counterweight×3: 15.75t 9m boom insert+9m luffing jib insert+fixed jib top: 2.72t 35t lifting hook: 1.2t |
| Transport weight | <ul style="list-style-type: none"> 19.67t |

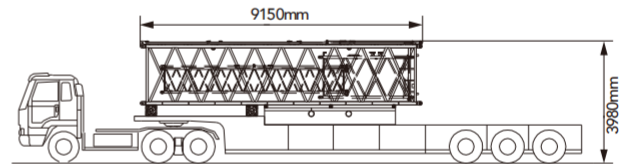


Transport Plan

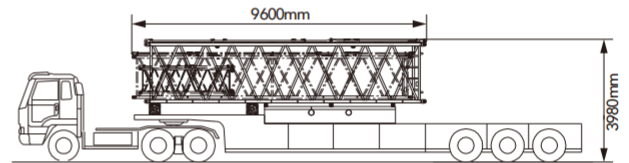
| | |
|---------------------|--|
| Transport cart 7 | |
| Components included | <ul style="list-style-type: none"> Counterweight×2: 10.5t 9m boom insert:+9m luffing jib insert+ 6m fixed jib insert: 2.53t 135t lifting hook: 2.04t 80t lifting hook: 1.94t 13.5t ball hook: 0.45t |
| Transport weight | 17.46t |



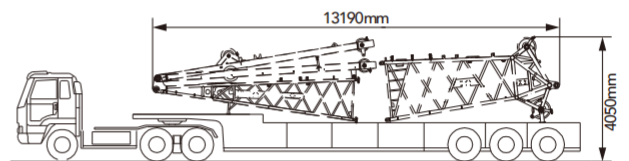
| | |
|---------------------|--|
| Transport cart 8 | |
| Components included | <ul style="list-style-type: none"> Carbody counterweight: 10t 9m boom insert:+3m luffing jib insert+6m fixed jib insert: 2.13t |
| Transport weight | 12.13t |



| | |
|---------------------|---|
| Transport cart 9 | |
| Components included | <ul style="list-style-type: none"> Carbody counterweight: 10t 9m boom insert:+9m luffing jib insert+ 3m fixed jib insert: 2.39t |
| Transport weight | 12.39t |



| | |
|---------------------|--|
| Transport cart 10 | |
| Components included | <ul style="list-style-type: none"> Luffing jib base with struts : 3.13t Boom top(special for LJ): 1.9t |
| Transport weight | 5.03t |





SCE1350A
SANY CRAWLER CRANE
135 TONS LIFTING CAPACITY

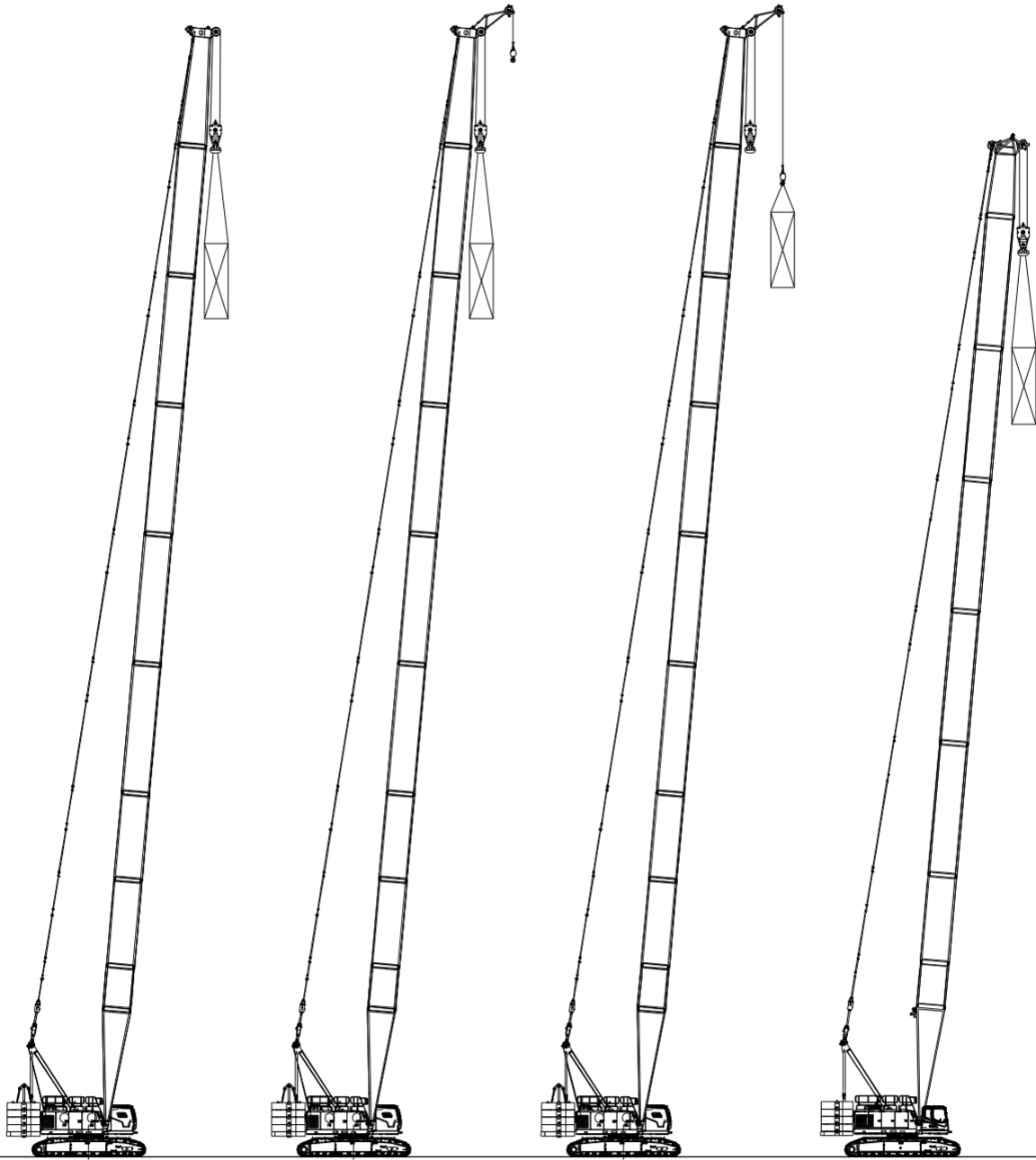
QUALITY CHANGES THE WORLD

Configurations

- Page 23 H Configuration
- Page 30 Hh Configuration
- Page 33 FJ Configuration
- Page 39 LJ Configuration

> 19

Boom Combination



H Configuration

HCm Configuration
(double hooks,
load on main hook)

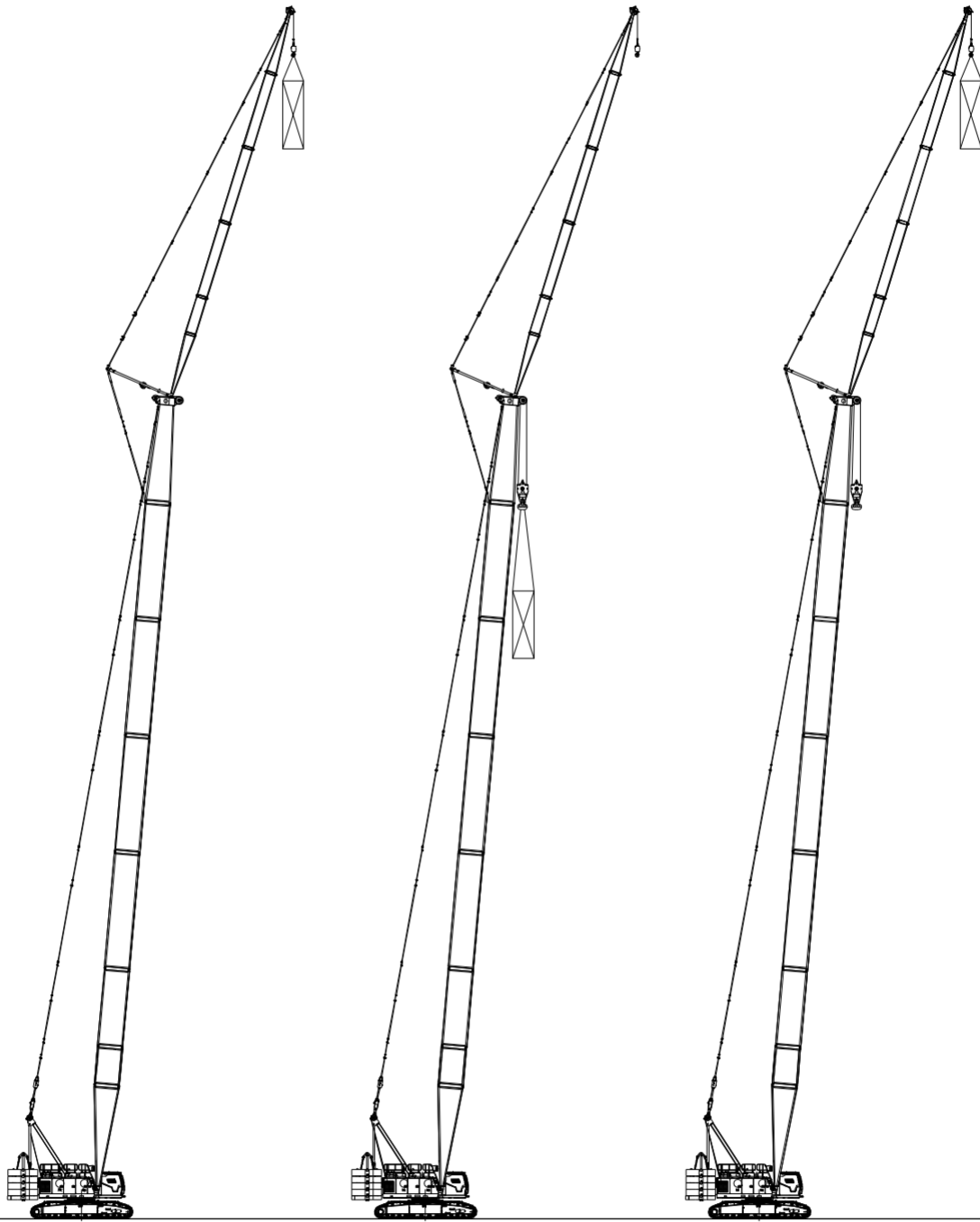
HCa Configuration
(double hooks,
load on aux. hook)

Hh Configuration

| Configuration | Boom Combination | Boom Length |
|---------------|--|-------------|
| H | Boom | 16m~76m |
| HCm | Boom + Extension jib (double hooks, load on main hook) | |
| HCa | Boom + Extension jib (double hooks, load on aux. hook) | |
| Hh | Boom (with boom top special for LJ) | 22m~67m |

Note: The schematics above are reference for loading only.

Boom Combination



FJ Configuration
(single hook)

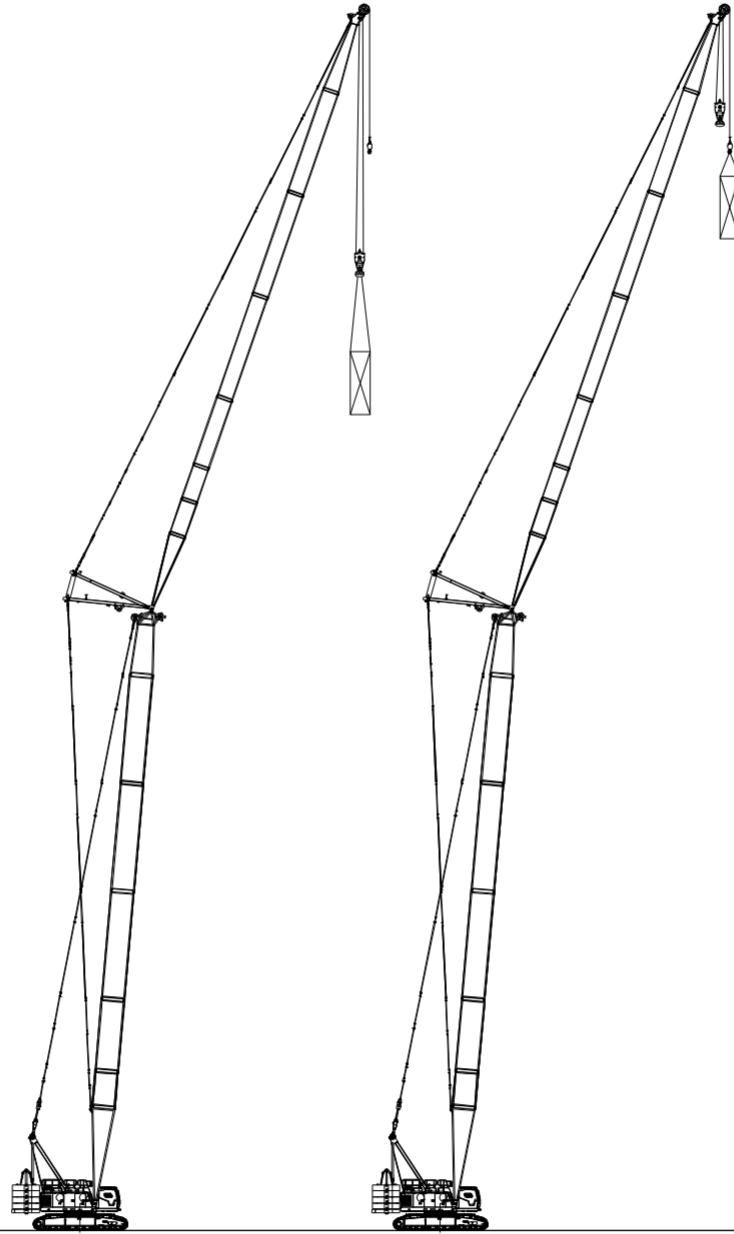
FJm Configuration
(double hooks, load on main hook)

FJa Configuration
(double hooks, load on aux. hook)

| Configuration | Boom Combination | Boom Length |
|---------------|--|-----------------------|
| FJ | Boom + Fixed Jib (single hook) | (22m~61m)+(13m~31m) |
| FJm | Boom + Fixed Jib (double hooks, load on main hook) | |
| FJa | Boom + Fixed Jib (double hooks, load on aux. hook) | |

Note: The schematics above are reference for loading only.

Boom Combination



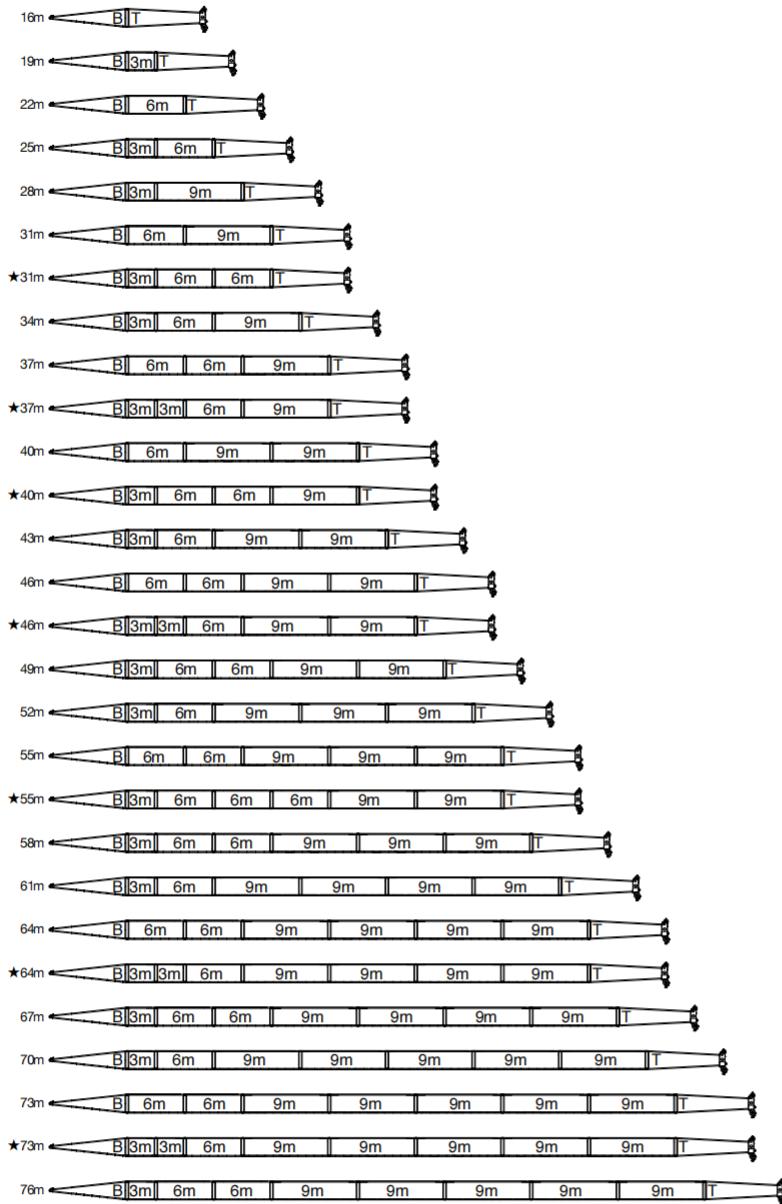
LJ Configuration
(double hooks,
load on luffing jib hook)

LJa Configuration
(double hooks,
load on extension jib hook)

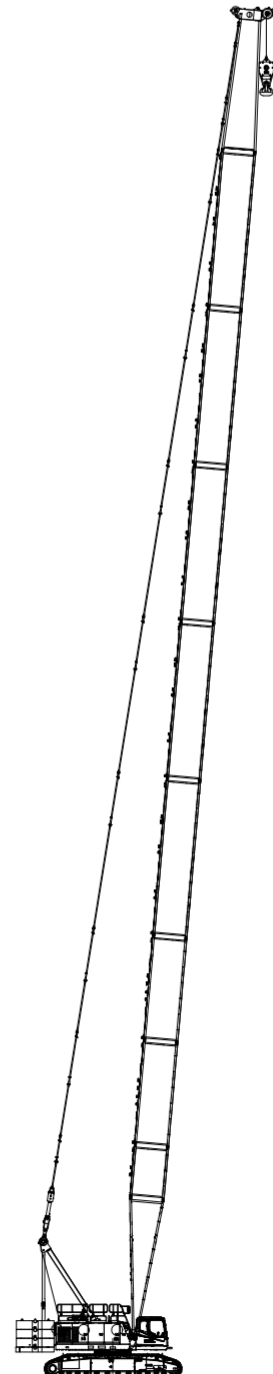
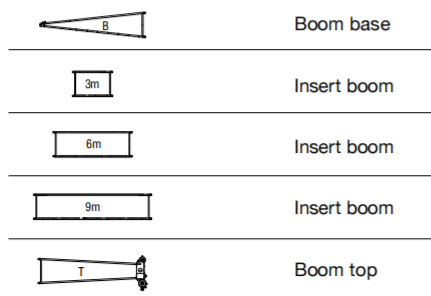
| Configuration | Boom Combination | Boom Length |
|---------------|---|-------------|
| LJ | Boom + Luffing Jib (double hooks, load on luffing jib hook) | 49m+52m |
| LJa | Boom + Luffing Jib (double hooks, load on extension jib hook) | |

Note: The schematics above are reference for loading only.

H Configuration

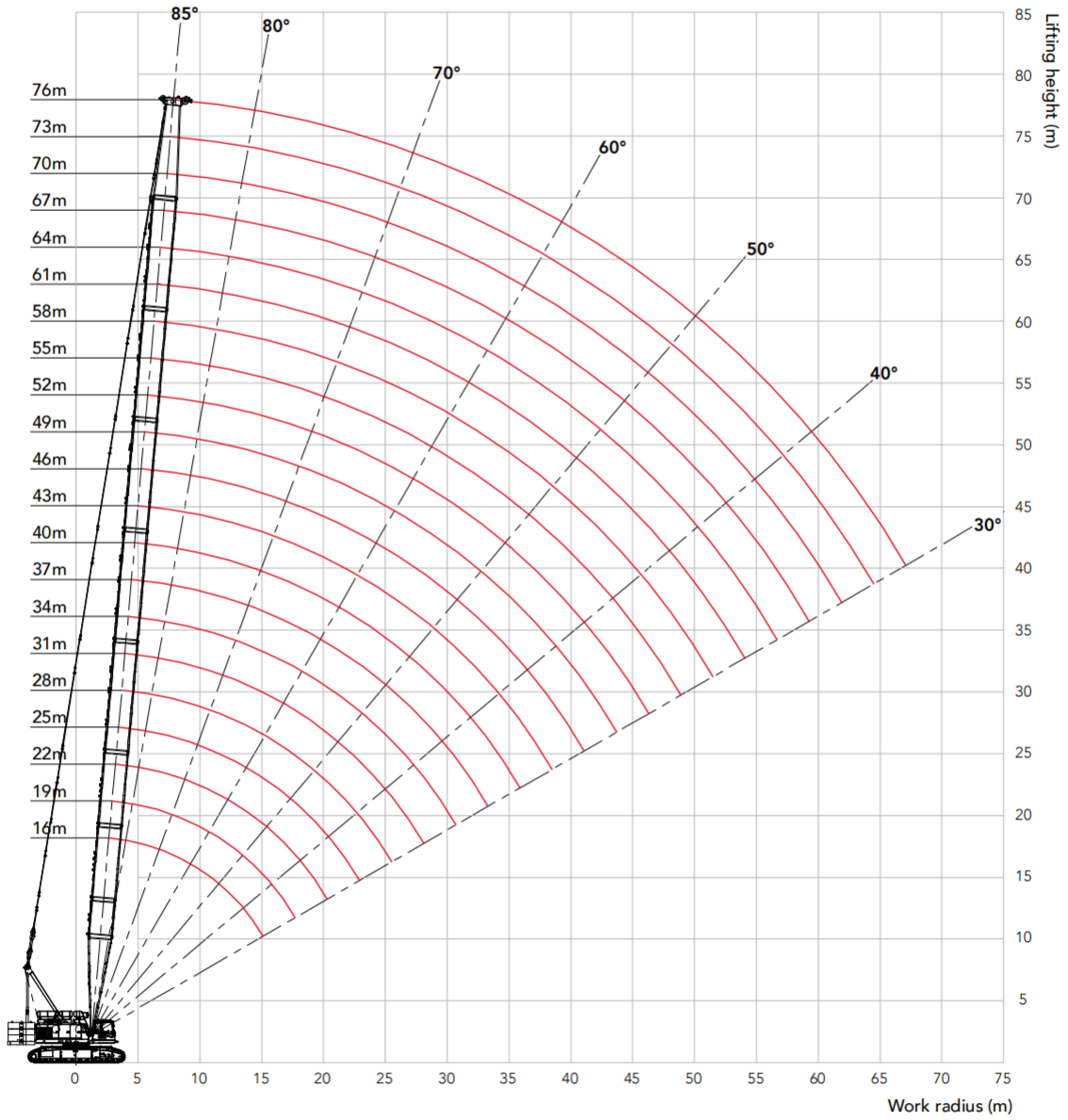


Note: The boom combinations with " ★ " are recommended for purchasing.



H Configuration:
(16m~76m)

H Working Radius



Unit: t

H Load Chart

Note:

1. The rated load in the load chart is calculated complying with EN 13000.
2. The working radius is the horizontal distance from the load center to the swing center.
3. The actual lifting capacity must subtract the weight of hooks and other riggings from the rated capacity in the load chart.
4. The load value is calculated when the object is hung freely, without considering the influence of wind on the load, ground conditions and slope, operation speed and the influence of any other negative factors over safe operation. Therefore, the operator bears the responsibility of making a judgement and decreasing the load and lowering speed.
5. All ratings are calculated when the machine is parking on firm and level ground with less than 1% gradient.
6. See the Operation Manual for the complete load charts of HCm and HCa configurations.
7. The 12 parts of line must use hook larger than 135t.

Load chart -H (Load on main hook, Boom 16~76m, Without extension jib) 1/6

| Load on main hook, Boom 16m~76m, Without extension jib | | | | | | | | | | | | | | | | |
|--|-------|--------|------|------|------|-------|--------|------|------|------|-------|--------|------|------|------|-------------------|
| Boom length(m) | 16 | | | | | 19 | | | | | 22 | | | | | Boom length(m) |
| Counterweight (t) | 54+20 | 43.5+0 | 33+0 | 12+0 | 0+0 | 54+20 | 43.5+0 | 33+0 | 12+0 | 0+0 | 54+20 | 43.5+0 | 33+0 | 12+0 | 0+0 | Counterweight (t) |
| Radius(m) | | | | | | | | | | | | | | | | Radius(m) |
| 4.6 | 135.0 | | | | | | | | | | | | | | | 4.6 |
| 5 | 131.0 | | | | | 130.0 | | | | | | | | | | 5 |
| 6 | 110.0 | 105.0 | 85.0 | 60.0 | 40.0 | 109.5 | | | | | 108.8 | | | | | 6 |
| 7 | 95.4 | 86.6 | 69.5 | 51.3 | 34.9 | 92.6 | 86.0 | 69.0 | 50.9 | 34.7 | 92.0 | 83.8 | 67.7 | 50.1 | 33.9 | 7 |
| 8 | 81.0 | 69.7 | 55.9 | 41.1 | 27.8 | 80.3 | 69.2 | 55.5 | 40.8 | 27.6 | 79.6 | 68.8 | 55.1 | 40.6 | 27.5 | 8 |
| 9 | 71.4 | 58.2 | 46.6 | 34.2 | 23.0 | 70.8 | 57.8 | 46.3 | 33.9 | 22.8 | 70.2 | 57.5 | 46.0 | 33.7 | 22.7 | 9 |
| 10 | 63.8 | 49.9 | 39.8 | 29.2 | 19.5 | 63.3 | 49.6 | 39.6 | 28.9 | 19.4 | 62.8 | 49.3 | 39.4 | 28.8 | 19.2 | 10 |
| 12 | 52.0 | 38.6 | 30.8 | 22.4 | 14.8 | 51.6 | 38.4 | 30.5 | 22.2 | 14.7 | 51.3 | 38.2 | 30.3 | 22.0 | 14.5 | 12 |
| 14 | 42.5 | 31.4 | 24.9 | 18.0 | 11.8 | 42.2 | 31.1 | 24.7 | 17.8 | 11.6 | 42.0 | 31.0 | 24.5 | 17.7 | 11.5 | 14 |
| 16 | | | | | | 35.5 | 26.1 | 20.6 | 14.7 | 9.5 | 35.3 | 25.9 | 20.4 | 14.6 | 9.4 | 16 |
| 18 | | | | | | 30.5 | 22.3 | 17.6 | 12.5 | 7.9 | 30.3 | 22.2 | 17.4 | 12.3 | 7.8 | 18 |
| 20 | | | | | | | | | | | 26.5 | 19.3 | 15.1 | 10.6 | 6.6 | 20 |
| Parts of line | 12 | 9 | 8 | 5 | 4 | 11 | 8 | 6 | 5 | 3 | 10 | 7 | 6 | 5 | 3 | Parts of line |

Load chart -H (Load on main hook, Boom 16~76m, Without extension jib) 2/6

| Load on main hook, Boom 16m~76m, Without extension jib | | | | | | | | | | | | | | | | |
|--|-------|--------|------|------|------|-------|--------|------|------|------|-------|--------|------|------|------|-------------------|
| Boom length(m) | 25 | | | | | 28 | | | | | 31 | | | | | Boom length(m) |
| Counterweight (t) | 54+20 | 43.5+0 | 33+0 | 12+0 | 0+0 | 54+20 | 43.5+0 | 33+0 | 12+0 | 0+0 | 54+20 | 43.5+0 | 33+0 | 12+0 | 0+0 | Counterweight (t) |
| Radius(m) | | | | | | | | | | | | | | | | Radius(m) |
| 6 | 108.0 | | | | | | | | | | | | | | | 6 |
| 7 | 91.4 | 80.8 | 65.2 | 48.2 | 32.6 | 89.7 | | | | | 86.7 | | | | | 7 |
| 8 | 79.1 | 68.4 | 54.8 | 40.3 | 27.2 | 78.1 | 66.3 | 53.4 | 39.3 | 26.3 | 75.5 | 64.3 | 51.7 | 38.0 | 25.4 | 8 |
| 9 | 69.6 | 57.2 | 45.7 | 33.5 | 22.5 | 69.2 | 56.8 | 45.4 | 33.2 | 22.3 | 67.0 | 56.0 | 44.9 | 32.9 | 21.8 | 9 |
| 10 | 62.2 | 49.0 | 39.1 | 28.5 | 19.1 | 61.7 | 48.7 | 38.8 | 28.3 | 18.9 | 60.2 | 48.4 | 38.6 | 28.1 | 18.7 | 10 |
| 12 | 50.9 | 37.9 | 30.1 | 21.8 | 14.4 | 50.6 | 37.7 | 29.9 | 21.7 | 14.2 | 50.2 | 37.5 | 29.7 | 21.5 | 14.1 | 12 |
| 14 | 41.7 | 30.7 | 24.3 | 17.5 | 11.3 | 41.5 | 30.5 | 24.1 | 17.3 | 11.2 | 41.3 | 30.3 | 24.0 | 17.2 | 11.1 | 14 |
| 16 | 35.0 | 25.7 | 20.2 | 14.4 | 9.2 | 34.8 | 25.5 | 20.1 | 14.3 | 9.1 | 34.6 | 25.3 | 19.9 | 14.1 | 8.9 | 16 |
| 18 | 30.1 | 22.0 | 17.2 | 12.2 | 7.6 | 29.9 | 21.8 | 17.1 | 12.0 | 7.5 | 29.7 | 21.6 | 16.9 | 11.9 | 7.4 | 18 |
| 20 | 26.3 | 19.1 | 14.9 | 10.4 | 6.4 | 26.1 | 19.0 | 14.8 | 10.3 | 6.3 | 25.9 | 18.8 | 14.6 | 10.1 | 6.1 | 20 |
| 22 | 23.3 | 16.8 | 13.1 | 9.0 | 5.4 | 23.1 | 16.7 | 12.9 | 8.9 | 5.3 | 22.9 | 16.5 | 12.8 | 8.8 | 5.2 | 22 |
| 24 | | | | | | 20.7 | 14.8 | 11.4 | 7.8 | 4.5 | 20.5 | 14.7 | 11.3 | 7.6 | 4.4 | 24 |
| 26 | | | | | | | 13.3 | 10.2 | | | 18.5 | 13.1 | 10.0 | 6.7 | 3.7 | 26 |
| 28 | | | | | | | | | | | 16.7 | 11.9 | 9.0 | | 3.2 | 28 |
| Parts of line | 9 | 7 | 6 | 5 | 3 | 8 | 6 | 5 | 4 | 3 | 8 | 6 | 5 | 4 | 3 | Parts of line |

H Load Chart

Load chart -H (Load on main hook, Boom 16~76m, Without extension jib) 3/6

| Load on main hook, Boom 16m~76m, Without extension jib | | | | | | | | | | | | | | | | | |
|--|-------|--------|------|------|------|-------|--------|------|------|------|-------|--------|------|------|------|-------------------|---------------|
| Boom length(m) | 34 | | | | | 37 | | | | | 40 | | | | | Boom length(m) | |
| Counterweight (t) | 54+20 | 43.5+0 | 33+0 | 12+0 | 0+0 | 54+20 | 43.5+0 | 33+0 | 12+0 | 0+0 | 54+20 | 43.5+0 | 33+0 | 12+0 | 0+0 | Counterweight (t) | |
| Radius(m) | | | | | | | | | | | | | | | | | Radius(m) |
| 7 | 84.0 | | | | | | | | | | | | | | | | 7 |
| 8 | 73.2 | 62.4 | 50.1 | 36.8 | 24.5 | 71.3 | | | | | 63.4 | | | | | | 8 |
| 9 | 64.9 | 54.4 | 43.6 | 31.9 | 21.0 | 63.2 | 53.0 | 42.4 | 30.9 | 20.3 | 61.3 | 51.6 | 41.3 | 30.0 | 19.6 | | 9 |
| 10 | 58.4 | 48.1 | 38.3 | 27.9 | 18.3 | 56.9 | 47.0 | 37.5 | 27.2 | 17.7 | 55.2 | 45.8 | 36.5 | 26.4 | 17.1 | | 10 |
| 12 | 48.7 | 37.2 | 29.5 | 21.3 | 13.9 | 47.5 | 37.0 | 29.3 | 21.1 | 13.8 | 46.0 | 36.7 | 29.1 | 20.9 | 13.4 | | 12 |
| 14 | 41.0 | 30.1 | 23.7 | 17.0 | 10.9 | 40.6 | 29.9 | 23.6 | 16.8 | 10.7 | 39.4 | 29.7 | 23.4 | 16.6 | 10.6 | | 14 |
| 16 | 34.4 | 25.1 | 19.7 | 13.9 | 8.8 | 34.4 | 24.9 | 19.5 | 13.8 | 8.6 | 34.0 | 24.7 | 19.4 | 13.6 | 8.5 | | 16 |
| 18 | 29.5 | 21.4 | 16.7 | 11.7 | 7.2 | 29.5 | 21.3 | 16.5 | 11.5 | 7.0 | 29.1 | 21.1 | 16.4 | 11.4 | 6.9 | | 18 |
| 20 | 25.7 | 18.6 | 14.4 | 10.0 | 6.0 | 25.7 | 18.4 | 14.2 | 9.8 | 5.8 | 25.3 | 18.2 | 14.1 | 9.6 | 5.7 | | 20 |
| 22 | 22.7 | 16.3 | 12.6 | 8.6 | 5.0 | 22.7 | 16.1 | 12.4 | 8.4 | 4.8 | 22.4 | 16.0 | 12.2 | 8.3 | 4.7 | | 22 |
| 24 | 20.3 | 14.5 | 11.1 | 7.4 | 4.2 | 20.3 | 14.3 | 10.9 | 7.3 | 4.0 | 19.9 | 14.1 | 10.8 | 7.1 | 3.9 | | 24 |
| 26 | 18.2 | 12.9 | 9.8 | 6.5 | 3.5 | 18.2 | 12.8 | 9.7 | 6.4 | 3.4 | 17.9 | 12.6 | 9.5 | 6.2 | 3.2 | | 26 |
| 28 | 16.5 | 11.7 | 8.8 | 5.7 | 3.0 | 16.5 | 11.5 | 8.6 | 5.6 | 2.8 | 16.2 | 11.3 | 8.5 | 5.4 | 2.6 | | 28 |
| 30 | 15.1 | 10.5 | 7.9 | 5.0 | 2.5 | 15.1 | 10.4 | 7.7 | 4.9 | 2.4 | 14.7 | 10.2 | 7.6 | 4.7 | 2.1 | | 30 |
| 32 | | | | | | 13.8 | 9.4 | 7.0 | 4.3 | | 13.5 | 9.3 | 6.8 | 4.2 | | | 32 |
| 34 | | | | | | | | | | | 12.4 | 8.4 | 6.1 | 3.7 | | | 34 |
| 36 | | | | | | | | | | | 11.4 | 7.7 | 5.5 | 3.2 | | | 36 |
| Parts of line | 7 | 6 | 5 | 4 | 3 | 6 | 5 | 4 | 3 | 2 | 6 | 5 | 4 | 3 | 2 | | Parts of line |

Unit: t

H Load Chart

| Load chart -H (Load on main hook, Boom 16~76m, Without extension jib) 4/6 | | | | | | | | | | | | | |
|--|-------|--------|------|------|-------|--------|------|------|-------|--------|------|------|-------------------|
| Load on main hook, Boom 16m~76m, Without extension jib | | | | | | | | | | | | | |
| Boom length(m) | 43 | | | | 46 | | | | 49 | | | | Boom length(m) |
| Counterweight (t) | 54+20 | 43.5+0 | 33+0 | 12+0 | 54+20 | 43.5+0 | 33+0 | 12+0 | 54+20 | 43.5+0 | 33+0 | 12+0 | Counterweight (t) |
| Radius(m) | | | | | | | | | | | | | Radius(m) |
| 9 | 54.7 | 50.2 | 40.1 | 29.1 | 53.3 | | | | 52.1 | | | | 9 |
| 10 | 50.7 | 44.6 | 35.5 | 25.6 | 49.8 | 43.5 | 34.6 | 24.9 | 46.7 | 42.4 | 33.7 | 24.2 | 10 |
| 12 | 44.7 | 36.3 | 28.7 | 20.5 | 43.6 | 35.5 | 28.0 | 19.9 | 41.5 | 34.6 | 27.3 | 19.3 | 12 |
| 14 | 38.4 | 29.5 | 23.2 | 16.4 | 37.4 | 29.3 | 23.0 | 16.3 | 36.4 | 29.0 | 22.7 | 15.8 | 14 |
| 16 | 33.2 | 24.5 | 19.2 | 13.4 | 32.5 | 24.3 | 19.0 | 13.3 | 31.7 | 24.1 | 18.8 | 13.1 | 16 |
| 18 | 28.9 | 20.9 | 16.2 | 11.2 | 28.5 | 20.7 | 16.0 | 11.0 | 27.8 | 20.5 | 15.8 | 10.8 | 18 |
| 20 | 25.1 | 18.0 | 13.9 | 9.5 | 24.9 | 17.9 | 13.7 | 9.3 | 24.7 | 17.6 | 13.5 | 9.1 | 20 |
| 22 | 22.1 | 15.8 | 12.0 | 8.1 | 22.0 | 15.6 | 11.9 | 7.9 | 21.7 | 15.4 | 11.7 | 7.7 | 22 |
| 24 | 19.7 | 13.9 | 10.6 | 7.0 | 19.5 | 13.8 | 10.4 | 6.8 | 19.3 | 13.6 | 10.2 | 6.6 | 24 |
| 26 | 17.7 | 12.4 | 9.3 | 6.0 | 17.5 | 12.2 | 9.2 | 5.9 | 17.3 | 12.0 | 9.0 | 5.7 | 26 |
| 28 | 16.0 | 11.1 | 8.3 | 5.2 | 15.8 | 11.0 | 8.1 | 5.1 | 15.6 | 10.8 | 7.9 | 4.8 | 28 |
| 30 | 14.5 | 10.0 | 7.4 | 4.6 | 14.4 | 9.9 | 7.2 | 4.4 | 14.1 | 9.7 | 7.0 | 4.2 | 30 |
| 32 | 13.3 | 9.1 | 6.6 | 4.0 | 13.1 | 8.9 | 6.4 | 3.8 | 12.9 | 8.7 | 6.2 | 3.5 | 32 |
| 34 | 12.2 | 8.2 | 5.9 | 3.5 | 12.0 | 8.1 | 5.8 | 3.3 | 11.8 | 7.9 | 5.6 | 3.0 | 34 |
| 36 | 11.2 | 7.5 | 5.3 | 3.0 | 11.0 | 7.3 | 5.2 | 2.8 | 10.8 | 7.1 | 5.0 | 2.6 | 36 |
| 38 | 10.3 | 6.8 | 4.8 | 2.6 | 10.2 | 6.7 | 4.6 | 2.4 | 10.0 | 6.5 | 4.4 | 2.1 | 38 |
| 40 | | | | | 9.4 | 6.1 | 4.2 | 2.1 | 9.2 | 5.9 | 4.0 | | 40 |
| 42 | | | | | | | | | 8.5 | 5.4 | 3.5 | | 42 |
| 44 | | | | | | | | | 7.9 | 4.9 | 3.1 | | 44 |
| Parts of line | 5 | 5 | 4 | 3 | 5 | 4 | 3 | 3 | 5 | 4 | 3 | 3 | Parts of line |

H Load Chart**Load chart -H (Load on main hook, Boom 16~76m, Without extension jib) 5/6**

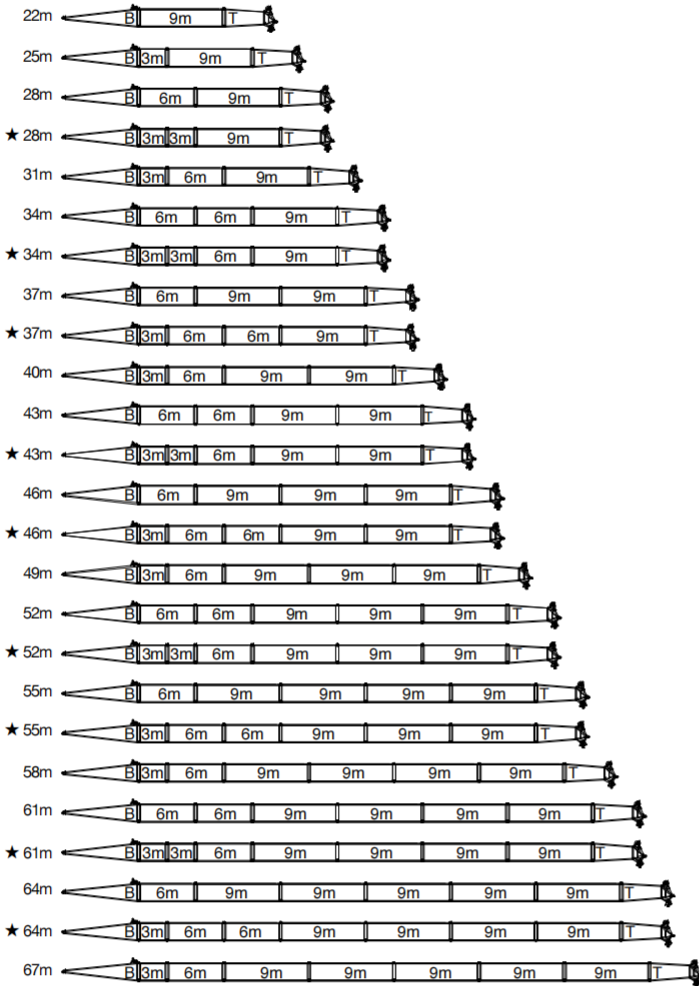
| Load on main hook, Boom 16m~76m, Without extension jib | | | | | | | | | | | |
|--|-------|--------|------|-------|--------|------|-------|--------|------|-------------------|-----------|
| Boom length(m) | 52 | | | 55 | | | 58 | | | Boom length(m) | |
| Counterweight (t) | 54+20 | 43.5+0 | 33+0 | 54+20 | 43.5+0 | 33+0 | 54+20 | 43.5+0 | 33+0 | Counterweight (t) | |
| Radius(m) | | | | | | | | | | | Radius(m) |
| 10 | 45.6 | 41.4 | 32.8 | 44.7 | | | 40.1 | | | 10 | |
| 12 | 41.5 | 33.8 | 26.6 | 40.6 | 33.1 | 26.0 | 36.1 | 32.3 | 25.3 | 12 | |
| 14 | 35.5 | 28.4 | 22.1 | 34.7 | 27.7 | 21.6 | 33.8 | 27.1 | 21.0 | 14 | |
| 16 | 31.0 | 23.9 | 18.6 | 30.2 | 23.7 | 18.3 | 29.5 | 23.1 | 17.8 | 16 | |
| 18 | 27.2 | 20.3 | 15.6 | 26.6 | 20.1 | 15.4 | 25.9 | 19.9 | 15.2 | 18 | |
| 20 | 24.1 | 17.5 | 13.3 | 23.6 | 17.3 | 13.2 | 23.0 | 17.1 | 13.0 | 20 | |
| 22 | 21.6 | 15.2 | 11.5 | 21.1 | 15.0 | 11.3 | 20.5 | 14.8 | 11.1 | 22 | |
| 24 | 19.1 | 13.4 | 10.0 | 18.9 | 13.2 | 9.9 | 18.5 | 13.0 | 9.7 | 24 | |
| 26 | 17.1 | 11.9 | 8.8 | 16.9 | 11.7 | 8.6 | 16.7 | 11.5 | 8.4 | 26 | |
| 28 | 15.4 | 10.6 | 7.7 | 15.2 | 10.4 | 7.6 | 15.0 | 10.2 | 7.4 | 28 | |
| 30 | 14.0 | 9.5 | 6.9 | 13.8 | 9.3 | 6.7 | 13.6 | 9.1 | 6.4 | 30 | |
| 32 | 12.7 | 8.5 | 6.1 | 12.5 | 8.4 | 5.9 | 12.3 | 8.2 | 5.6 | 32 | |
| 34 | 11.6 | 7.7 | 5.4 | 11.4 | 7.5 | 5.2 | 11.2 | 7.3 | 5.0 | 34 | |
| 36 | 10.7 | 7.0 | 4.8 | 10.5 | 6.8 | 4.6 | 10.3 | 6.6 | 4.3 | 36 | |
| 38 | 9.8 | 6.3 | 4.3 | 9.6 | 6.1 | 4.1 | 9.4 | 5.9 | 3.8 | 38 | |
| 40 | 9.0 | 5.7 | 3.8 | 8.8 | 5.6 | 3.6 | 8.6 | 5.4 | 3.3 | 40 | |
| 42 | 8.3 | 5.2 | 3.4 | 8.2 | 5.0 | 3.2 | 8.0 | 4.8 | 2.9 | 42 | |
| 44 | 7.7 | 4.7 | 3.0 | 7.5 | 4.6 | 2.8 | 7.3 | 4.4 | 2.5 | 44 | |
| 46 | 7.1 | 4.3 | 2.6 | 7.0 | 4.1 | 2.5 | 6.8 | 3.9 | 2.1 | 46 | |
| 48 | | | | 6.4 | 3.7 | 2.1 | 6.2 | 3.5 | | 48 | |
| 50 | | | | | | | 5.8 | 3.2 | | 50 | |
| Parts of line | 4 | 4 | 3 | 4 | 3 | 3 | 4 | 3 | 3 | Parts of line | |

Unit: t

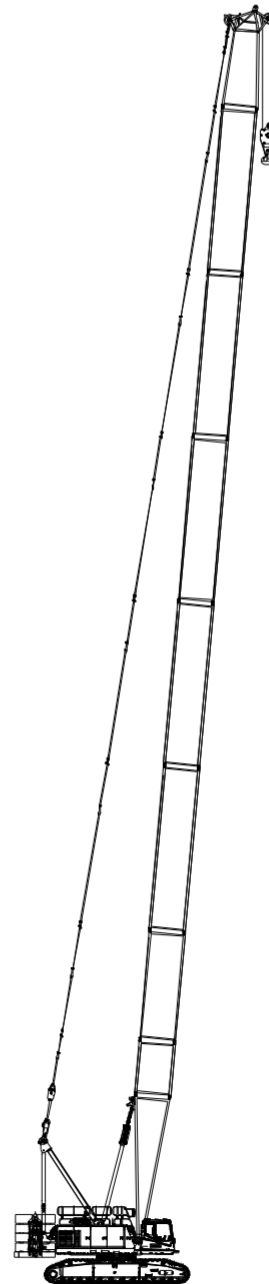
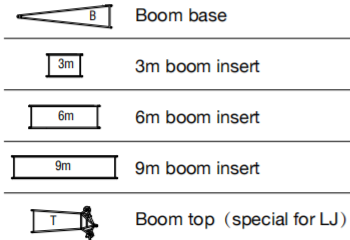
H Load Chart

| Load chart -H (Load on main hook, Boom 16~76m, Without extension jib) 6/6 | | | | | | | | | | | |
|--|-------|--------|-------|--------|-------|--------|-------|-------|-------|-------------------|-----------|
| Load on main hook, Boom 16m~76m, Without extension jib | | | | | | | | | | | |
| Boom length(m) | 61 | | 64 | | 67 | | 70 | 73 | 76 | Boom length(m) | |
| Counterweight (t) | 54+20 | 43.5+0 | 54+20 | 43.5+0 | 54+20 | 43.5+0 | 54+20 | 54+20 | 54+20 | Counterweight (t) | |
| Radius(m) | | | | | | | | | | | Radius(m) |
| 12 | 35.3 | 31.5 | 32.8 | | 30.1 | | 27.5 | 24.0 | 22.6 | 12 | |
| 14 | 33.1 | 26.5 | 31.1 | 25.8 | 28.6 | 25.2 | 26.6 | 23.9 | 22.2 | 14 | |
| 16 | 28.8 | 22.6 | 28.1 | 22.1 | 26.6 | 21.5 | 25.3 | 23.3 | 21.8 | 16 | |
| 18 | 25.3 | 19.5 | 24.7 | 19.0 | 24.1 | 18.6 | 23.5 | 22.6 | 21.1 | 18 | |
| 20 | 22.4 | 16.9 | 21.9 | 16.6 | 21.3 | 16.1 | 20.8 | 20.3 | 19.8 | 20 | |
| 22 | 20.0 | 14.7 | 19.5 | 14.5 | 19.0 | 14.2 | 18.5 | 18.1 | 17.6 | 22 | |
| 24 | 18.0 | 12.8 | 17.5 | 12.7 | 17.1 | 12.3 | 16.6 | 16.2 | 15.7 | 24 | |
| 26 | 16.3 | 11.3 | 15.8 | 11.1 | 15.4 | 10.8 | 15.0 | 14.5 | 14.1 | 26 | |
| 28 | 14.8 | 10.0 | 14.3 | 9.9 | 13.9 | 9.5 | 13.5 | 13.1 | 12.7 | 28 | |
| 30 | 13.4 | 8.9 | 13.0 | 8.8 | 12.6 | 8.4 | 12.2 | 11.9 | 11.5 | 30 | |
| 32 | 12.2 | 8.0 | 11.9 | 7.8 | 11.5 | 7.5 | 11.1 | 10.8 | 10.4 | 32 | |
| 34 | 11.1 | 7.2 | 10.9 | 7.0 | 10.5 | 6.6 | 10.1 | 9.8 | 9.4 | 34 | |
| 36 | 10.1 | 6.4 | 9.9 | 6.2 | 9.6 | 5.9 | 9.2 | 8.9 | 8.5 | 36 | |
| 38 | 9.2 | 5.8 | 9.1 | 5.6 | 8.7 | 5.2 | 8.4 | 8.1 | 7.7 | 38 | |
| 40 | 8.5 | 5.2 | 8.3 | 5.0 | 8.0 | 4.6 | 7.7 | 7.4 | 7.0 | 40 | |
| 42 | 7.8 | 4.7 | 7.6 | 4.4 | 7.3 | 4.1 | 7.0 | 6.7 | 6.3 | 42 | |
| 44 | 7.2 | 4.2 | 7.0 | 3.9 | 6.7 | 3.6 | 6.4 | 6.1 | 5.7 | 44 | |
| 46 | 6.6 | 3.8 | 6.4 | 3.5 | 6.1 | 3.2 | 5.8 | 5.5 | 5.2 | 46 | |
| 48 | 6.1 | 3.4 | 5.9 | 3.1 | 5.6 | 2.8 | 5.3 | 5.0 | 4.7 | 48 | |
| 50 | 5.6 | 3.0 | 5.4 | 2.7 | 5.1 | 2.4 | 4.8 | 4.5 | 4.2 | 50 | |
| 52 | 5.2 | | 5.0 | | 4.7 | | 4.4 | 4.1 | 3.8 | 52 | |
| 54 | 4.7 | | 4.6 | | 4.3 | | 4.0 | 3.7 | 3.4 | 54 | |
| 56 | | | 4.2 | | 3.9 | | 3.6 | 3.3 | 3.0 | 56 | |
| 58 | | | | | 3.6 | | 3.3 | 3.0 | 2.4 | 58 | |
| 60 | | | | | | | 2.9 | 2.6 | | 60 | |
| 62 | | | | | | | 2.6 | | | 62 | |
| Parts of line | 3 | 3 | 3 | 3 | 3 | 3 | 3 | 2 | 2 | Parts of line | |

Hh Configuration

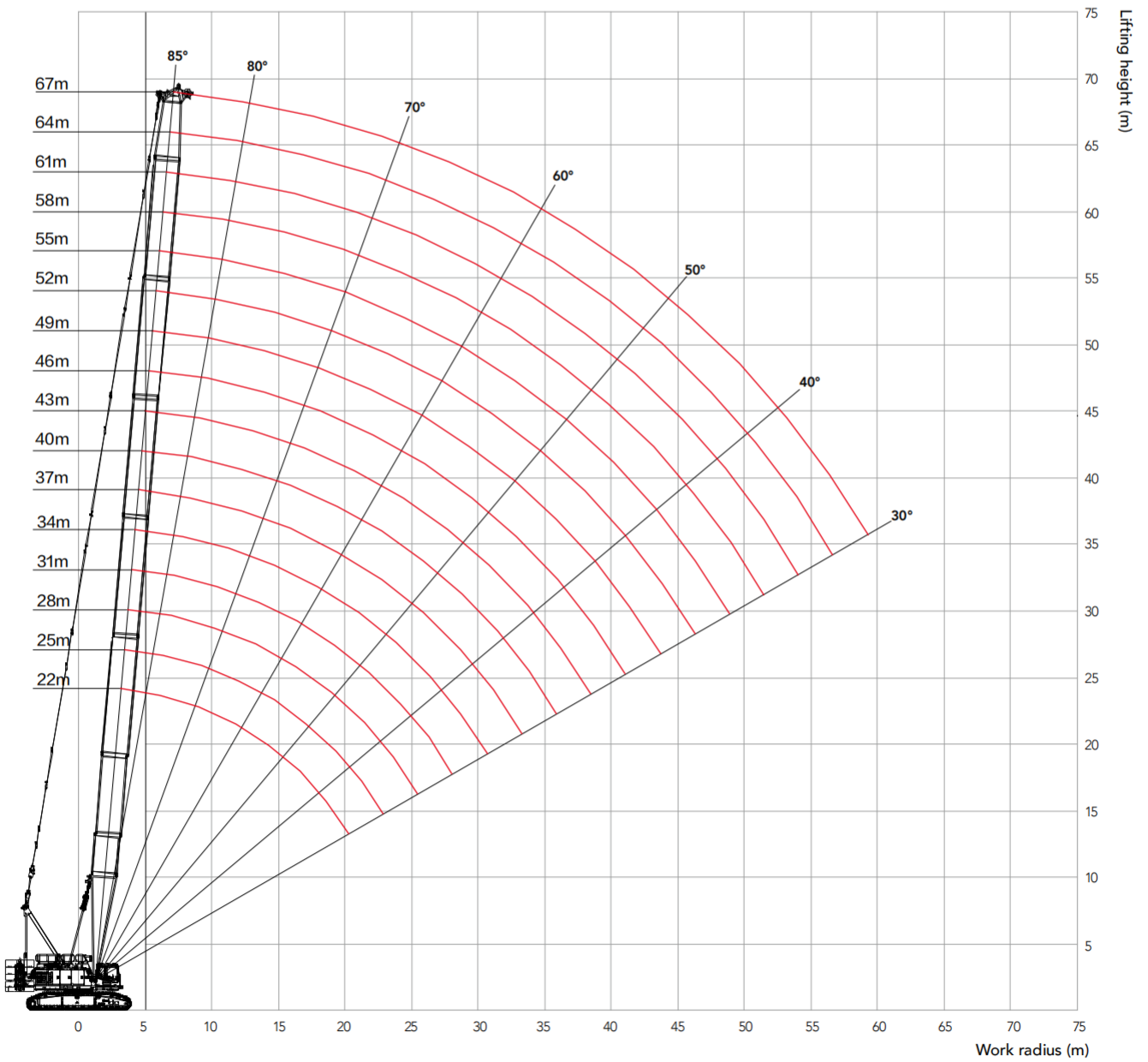


Note: The boom combinations with " ★ " are recommended for purchasing.



Hh Configuration
(22m~67m)

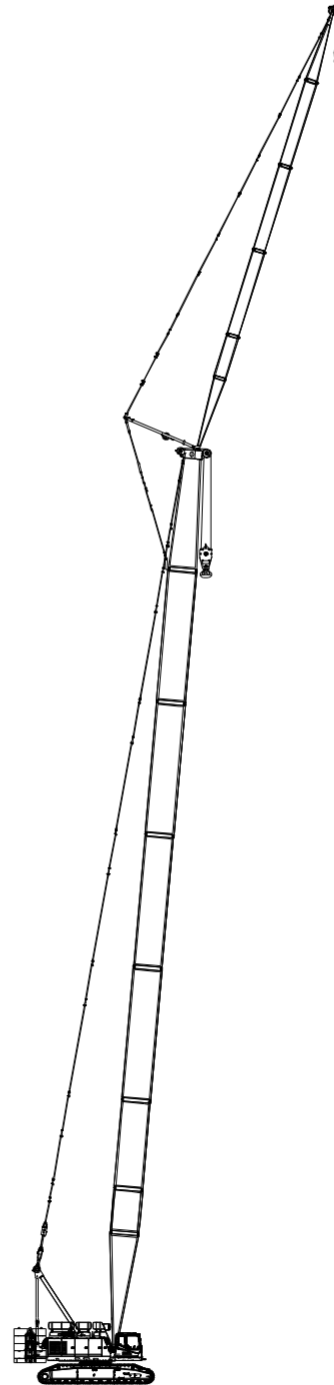
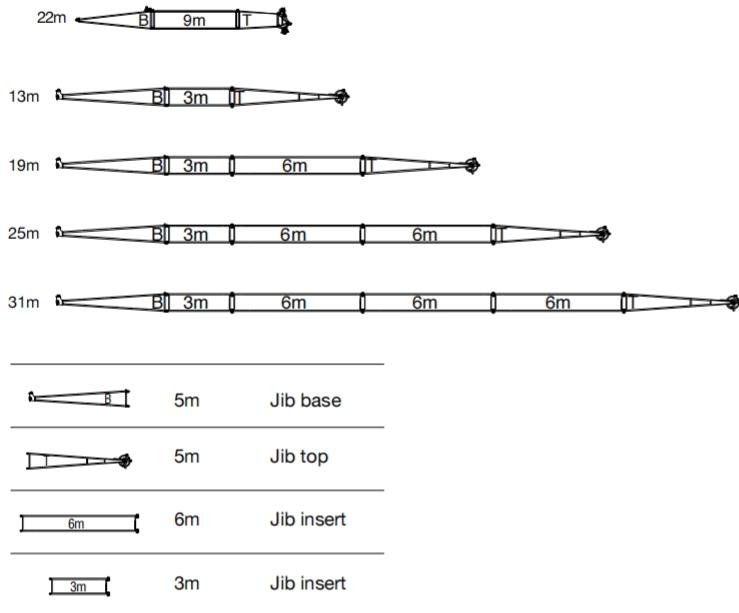
Hh Working Radius



Hh Load Chart

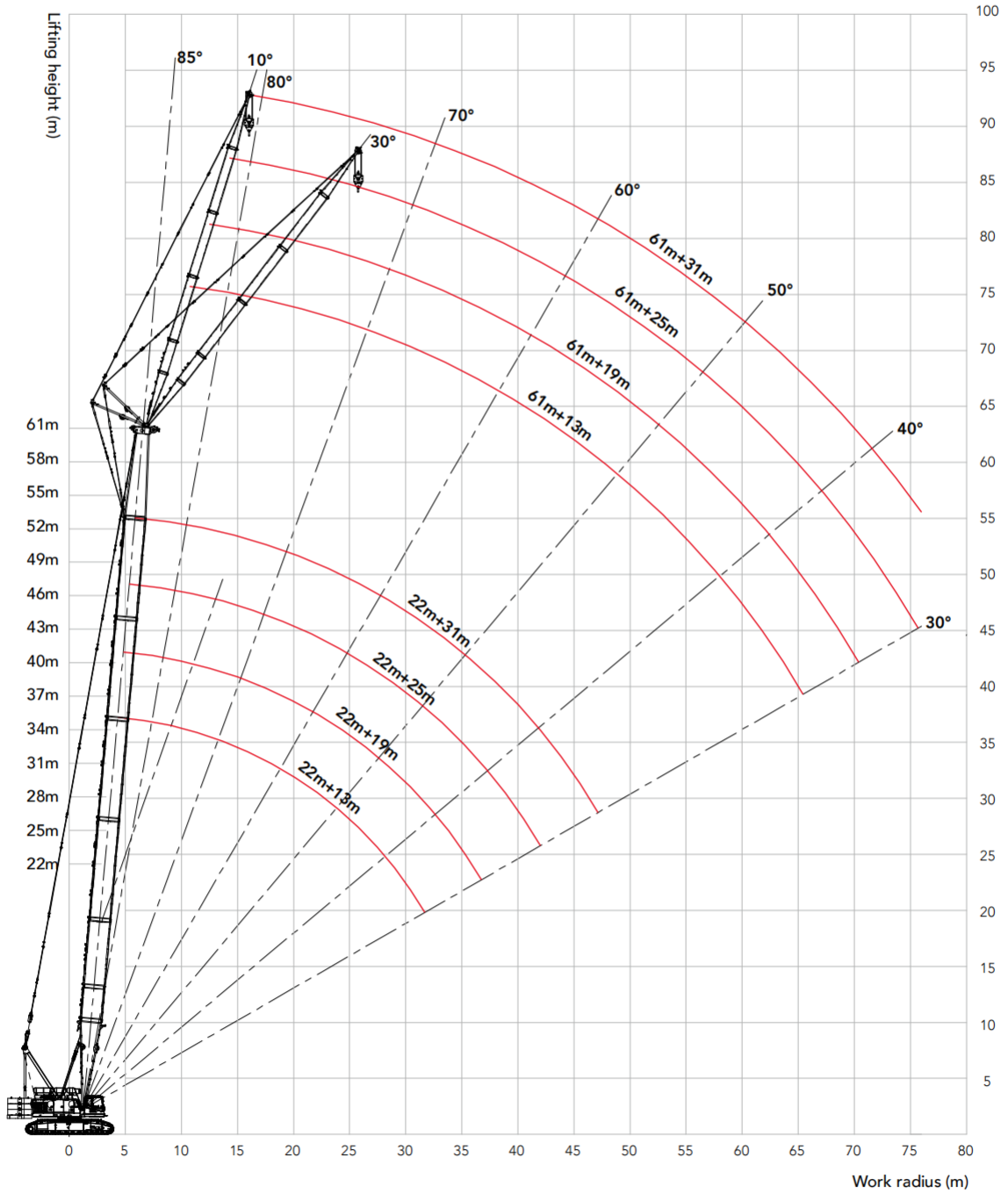
| Load chart -Hh | | | | | | | | | | | | | | | | | | |
|--------------------------------|-------|------|------|------|------|------|------|------|------|------|------|------|------|------|------|------|-------------------------------|---------------|
| Load on main hook, Boom 22~67m | | | | | | | | | | | | | | | | | | |
| Boom length (m) Radius (m) | 22 | 25 | 28 | 31 | 34 | 37 | 40 | 43 | 46 | 49 | 52 | 55 | 58 | 61 | 64 | 67 | Boom length (m) Radius (m) | |
| 7 | 72.0 | 71.8 | 71.6 | | | | | | | | | | | | | | 7 | |
| 8 | 71.3 | 70.9 | 70.5 | 70.2 | 69.9 | 69.6 | 63.4 | 61.7 | | | | | | | | | 8 | |
| 9 | 70.2 | 69.6 | 69.2 | 67.0 | 64.9 | 63.2 | 61.3 | 54.7 | 53.3 | 52.1 | 48.3 | 47.6 | 42.5 | | | | 9 | |
| 10 | 62.8 | 62.2 | 61.7 | 60.2 | 58.4 | 56.9 | 55.2 | 50.7 | 49.8 | 46.7 | 45.6 | 44.7 | 40.1 | 38.2 | 34.2 | 30.9 | 10 | |
| 12 | 51.3 | 50.9 | 50.6 | 50.2 | 48.7 | 47.5 | 46.0 | 44.7 | 43.6 | 41.5 | 41.5 | 40.6 | 36.1 | 35.3 | 32.8 | 30.1 | 12 | |
| 14 | 42.0 | 41.7 | 41.5 | 41.3 | 41.0 | 40.6 | 39.4 | 38.4 | 37.4 | 36.4 | 35.5 | 34.3 | 33.1 | 31.5 | 30.6 | 28.6 | 14 | |
| 16 | 35.3 | 35.0 | 34.8 | 34.6 | 34.4 | 34.4 | 34.0 | 33.2 | 32.5 | 31.7 | 31.0 | 29.6 | 28.4 | 27.2 | 26.3 | 25.2 | 16 | |
| 18 | 30.3 | 30.1 | 29.9 | 29.7 | 29.5 | 29.5 | 29.1 | 28.9 | 28.5 | 27.8 | 27.2 | 25.7 | 24.9 | 23.9 | 22.9 | 22.1 | 18 | |
| 20 | 26.5 | 26.3 | 26.1 | 25.9 | 25.7 | 25.7 | 25.3 | 25.1 | 24.9 | 24.7 | 24.1 | 22.9 | 21.9 | 21.0 | 20.2 | 19.5 | 20 | |
| 22 | | 23.3 | 23.1 | 22.9 | 22.7 | 22.7 | 22.4 | 22.1 | 22.0 | 21.7 | 21.6 | 20.4 | 19.6 | 18.7 | 18.1 | 17.3 | 22 | |
| 24 | | | 20.7 | 20.5 | 20.3 | 20.3 | 19.9 | 19.7 | 19.5 | 19.3 | 19.1 | 18.2 | 17.5 | 16.8 | 16.2 | 15.4 | 24 | |
| 26 | | | | 18.5 | 18.2 | 18.2 | 17.9 | 17.7 | 17.5 | 17.3 | 17.1 | 16.5 | 15.8 | 15.2 | 14.5 | 13.9 | 26 | |
| 28 | | | | 16.7 | 16.5 | 16.5 | 16.2 | 16.0 | 15.8 | 15.6 | 15.4 | 14.9 | 14.3 | 13.7 | 13.0 | 12.5 | 28 | |
| 30 | | | | | 15.0 | 15.1 | 14.7 | 14.5 | 14.4 | 14.1 | 14.0 | 13.6 | 13.0 | 12.4 | 11.9 | 11.3 | 30 | |
| 32 | | | | | | 13.6 | 13.5 | 13.3 | 13.1 | 12.9 | 12.7 | 12.3 | 11.8 | 11.2 | 10.8 | 10.3 | 32 | |
| 34 | | | | | | | 12.2 | 12.2 | 12.0 | 11.8 | 11.6 | 11.1 | 10.7 | 10.3 | 9.8 | 9.3 | 34 | |
| 36 | | | | | | | 10.6 | 10.9 | 11.0 | 10.8 | 10.5 | 10.2 | 9.7 | 9.4 | 8.9 | 8.4 | 36 | |
| 38 | | | | | | | | 9.6 | 9.7 | 9.8 | 9.4 | 9.1 | 8.9 | 8.5 | 8.0 | 7.6 | 38 | |
| 40 | | | | | | | | | 8.6 | 8.7 | 8.5 | 8.3 | 8.0 | 7.6 | 7.2 | 6.9 | 40 | |
| 42 | | | | | | | | | | 7.8 | 7.5 | 7.5 | 7.3 | 7.0 | 6.5 | 6.3 | 42 | |
| 44 | | | | | | | | | | 6.7 | 6.7 | 6.7 | 6.5 | 6.2 | 6.0 | 5.6 | 44 | |
| 46 | | | | | | | | | | | 5.9 | 5.9 | 5.8 | 5.5 | 5.3 | 5.0 | 46 | |
| 48 | | | | | | | | | | | | 5.1 | 5.0 | 5.0 | 4.7 | 4.4 | 48 | |
| 50 | | | | | | | | | | | | | 4.4 | 4.3 | 4.2 | 3.8 | 50 | |
| 52 | | | | | | | | | | | | | | 3.6 | 3.5 | 3.4 | 52 | |
| 54 | | | | | | | | | | | | | | | 3.1 | 3.0 | 54 | |
| 56 | | | | | | | | | | | | | | | | 2.5 | 56 | |
| Counterweight | 54+20 | | | | | | | | | | | | | | | | Counterweight | |
| Parts of line | 6 | 6 | 6 | 6 | 6 | 6 | 6 | 6 | 6 | 5 | 5 | 5 | 4 | 4 | 4 | 3 | 3 | Parts of line |

FJ Configuration



FJ Configuration
(22m~61m)+(13m~31m)

FJ Working Radius



Unit: t

FJ Load Chart

Note:

1. The rated load in the load chart is calculated complying with EN 13000.
2. The working radius is the horizontal distance from the load center to the swing center.
3. The actual lifting capacity must subtract the weight of hooks and other riggings from the rated capacity in the load chart.
4. The load value is calculated when the object is hung freely, without considering the influence of wind on the load, ground conditions and slope, operation speed and the influence of any other negative factors over safe operation. Therefore, the operator bears the responsibility of making a judgement and decreasing the load and lowering speed.
5. All ratings are calculated when the machine is parking on firm and level ground with less than 1% gradient.
6. When the jib length is 42.7ft (13m), 1 part of line shall not be permitted.
7. See the Operation Manual for the complete load charts of FJ, FJm and FJa configurations.

Load chart -FJ (Load on aux. hook, Boom 22~61m, Without main hook) 1/4

| Load chart -FJ (Load on aux. hook, Boom 22~61m, Without main hook) 1/4 | | | | | | | | | | | | | | | | |
|---|-------|------|------|------|------|------|------|------|------|------|------|------|------|------|----------------------------------|---------------|
| Jib 13m, Boom to jib angle 10° | | | | | | | | | | | | | | | | |
| Boom length (m) Radius (m) | 22 | 25 | 28 | 31 | 34 | 37 | 40 | 43 | 46 | 49 | 52 | 55 | 58 | 61 | Boom length (m) Radius (m) | |
| 9 | 27.0 | 27.0 | | | | | | | | | | | | | 9 | |
| 10 | 27.0 | 27.0 | 27.0 | 26.8 | 26.8 | | | | | | | | | | 10 | |
| 12 | 26.9 | 26.5 | 26.8 | 26.8 | 26.8 | 26.5 | 25.8 | 25.1 | | | | | | | 12 | |
| 14 | 26.2 | 25.8 | 26.1 | 26.3 | 26.5 | 26.5 | 25.8 | 25.1 | 24.4 | 23.6 | 22.9 | 22.0 | | | 14 | |
| 16 | 25.6 | 24.9 | 25.3 | 25.5 | 25.8 | 26.0 | 25.7 | 25.2 | 24.4 | 23.6 | 22.9 | 22.0 | 21.3 | 20.5 | 16 | |
| 18 | 25.1 | 24.4 | 24.6 | 24.5 | 24.9 | 25.1 | 25.2 | 24.5 | 24.1 | 23.3 | 22.3 | 21.3 | 21.0 | 20.2 | 18 | |
| 20 | 24.3 | 23.5 | 23.3 | 23.3 | 23.5 | 23.7 | 23.1 | 22.4 | 21.8 | 21.2 | 20.7 | 20.1 | 19.6 | 19.1 | 20 | |
| 22 | 22.9 | 22.3 | 22.1 | 21.9 | 21.9 | 21.7 | 21.0 | 20.3 | 19.8 | 19.2 | 18.7 | 18.2 | 17.7 | 17.2 | 22 | |
| 24 | 20.7 | 20.5 | 20.3 | 20.1 | 19.9 | 19.8 | 19.2 | 18.6 | 18.1 | 17.5 | 17.0 | 16.6 | 16.1 | 15.6 | 24 | |
| 26 | 18.7 | 18.5 | 18.3 | 18.1 | 17.9 | 17.9 | 17.6 | 17.1 | 16.6 | 16.1 | 15.6 | 15.2 | 14.7 | 14.3 | 26 | |
| 28 | 17.0 | 16.8 | 16.6 | 16.5 | 16.3 | 16.2 | 15.9 | 15.7 | 15.3 | 14.8 | 14.4 | 13.9 | 13.5 | 13.1 | 28 | |
| 30 | 15.6 | 15.4 | 15.2 | 15.0 | 14.8 | 14.8 | 14.5 | 14.3 | 14.1 | 13.9 | 13.3 | 12.9 | 12.5 | 12.1 | 30 | |
| 32 | 14.4 | 14.1 | 14.0 | 13.8 | 13.6 | 13.5 | 13.2 | 13.1 | 12.9 | 12.7 | 12.5 | 11.9 | 11.5 | 11.1 | 32 | |
| 34 | | 13.1 | 12.9 | 12.7 | 12.5 | 12.5 | 12.2 | 12.0 | 11.8 | 11.6 | 11.4 | 11.3 | 11.0 | 10.3 | 34 | |
| 36 | | | 11.9 | 11.8 | 11.6 | 11.5 | 11.2 | 11.0 | 10.8 | 10.7 | 10.5 | 10.3 | 10.1 | 9.7 | 36 | |
| 38 | | | 11.1 | 10.9 | 10.7 | 10.7 | 10.4 | 10.2 | 10.0 | 9.8 | 9.6 | 9.5 | 9.3 | 8.9 | 38 | |
| 40 | | | | 10.2 | 10.0 | 9.9 | 9.6 | 9.4 | 9.2 | 9.1 | 8.9 | 8.7 | 8.5 | 8.2 | 40 | |
| 42 | | | | | 9.3 | 9.2 | 8.9 | 8.7 | 8.6 | 8.4 | 8.2 | 8.0 | 7.8 | 7.6 | 42 | |
| 44 | | | | | | 8.6 | 8.3 | 8.1 | 7.9 | 7.8 | 7.6 | 7.4 | 7.2 | 7.0 | 44 | |
| 46 | | | | | | | 7.8 | 7.6 | 7.4 | 7.2 | 7.0 | 6.9 | 6.6 | 6.4 | 46 | |
| 48 | | | | | | | 7.2 | 7.0 | 6.9 | 6.7 | 6.5 | 6.3 | 6.1 | 5.9 | 48 | |
| 50 | | | | | | | | 6.6 | 6.4 | 6.2 | 6.0 | 5.8 | 5.6 | 5.4 | 50 | |
| 52 | | | | | | | | | 6.0 | 5.7 | 5.5 | 5.3 | 5.1 | 4.9 | 52 | |
| 54 | | | | | | | | | | 5.3 | 5.1 | 4.9 | 4.7 | 4.5 | 54 | |
| 56 | | | | | | | | | | | 4.9 | 4.7 | 4.5 | 4.3 | 56 | |
| 58 | | | | | | | | | | | | 4.4 | 4.2 | 3.9 | 58 | |
| 60 | | | | | | | | | | | | | 3.8 | 3.6 | 60 | |
| 62 | | | | | | | | | | | | | | 3.4 | 62 | |
| 64 | | | | | | | | | | | | | | 3.0 | 64 | |
| 66 | | | | | | | | | | | | | | | 66 | |
| Counterweight | 54+20 | | | | | | | | | | | | | | Counterweight | |
| Parts of line | 3 | 3 | 3 | 3 | 3 | 3 | 3 | 3 | 3 | 3 | 2 | 2 | 2 | 2 | 2 | Parts of line |

FJ Load Chart

Load chart -FJ (Load on aux. hook, Boom 22~61m, Without main hook) 2/4

| Jib 25m, Boom to jib angle 10° | | | | | | | | | | | | | | | |
|--------------------------------|-------|------|------|------|------|------|------|------|------|------|------|------|------|------|-------------------------------|
| Boom length (m) Radius (m) | 22 | 25 | 28 | 31 | 34 | 37 | 40 | 43 | 46 | 49 | 52 | 55 | 58 | 61 | Boom length (m) Radius (m) |
| 14 | 12.1 | 11.9 | | | | | | | | | | | | | 14 |
| 16 | 11.9 | 11.7 | 11.7 | 11.7 | 11.6 | | | | | | | | | | 16 |
| 18 | 11.7 | 11.5 | 11.5 | 11.4 | 11.3 | 11.3 | 11.5 | 11.5 | | | | | | | 18 |
| 20 | 11.5 | 11.3 | 11.2 | 11.0 | 11.0 | 11.1 | 11.2 | 11.3 | 11.2 | 11.2 | 11.2 | 11.1 | | | 20 |
| 22 | 11.3 | 11.0 | 10.9 | 10.6 | 10.6 | 10.8 | 11.0 | 11.0 | 10.9 | 10.9 | 11.0 | 10.9 | 10.9 | 10.8 | 22 |
| 24 | 11.1 | 10.6 | 10.5 | 10.2 | 10.2 | 10.4 | 10.6 | 10.8 | 10.7 | 10.6 | 10.7 | 10.6 | 10.7 | 10.6 | 24 |
| 26 | 10.8 | 10.3 | 10.2 | 9.9 | 9.9 | 10.0 | 10.3 | 10.5 | 10.4 | 10.4 | 10.4 | 10.5 | 10.4 | 10.4 | 26 |
| 28 | 10.6 | 10.0 | 9.8 | 9.6 | 9.7 | 9.7 | 10.0 | 10.2 | 10.1 | 10.2 | 10.3 | 10.3 | 10.3 | 10.2 | 28 |
| 30 | 10.3 | 9.8 | 9.5 | 9.4 | 9.4 | 9.4 | 9.8 | 9.9 | 9.9 | 9.9 | 10.0 | 10.1 | 10.0 | 10.0 | 30 |
| 32 | 10.1 | 9.5 | 9.2 | 9.0 | 9.1 | 9.1 | 9.5 | 9.6 | 9.6 | 9.7 | 9.7 | 9.9 | 9.8 | 9.7 | 32 |
| 34 | 9.9 | 9.2 | 8.9 | 8.8 | 8.8 | 8.9 | 9.2 | 9.3 | 9.3 | 9.4 | 9.6 | 9.6 | 9.6 | 9.4 | 34 |
| 36 | 9.7 | 8.9 | 8.7 | 8.6 | 8.6 | 8.6 | 9.0 | 9.0 | 9.1 | 9.1 | 9.1 | 9.2 | 9.3 | 9.0 | 36 |
| 38 | 9.5 | 8.8 | 8.4 | 8.3 | 8.3 | 8.4 | 8.6 | 8.7 | 8.8 | 8.7 | 8.8 | 8.9 | 8.9 | 8.6 | 38 |
| 40 | 9.3 | 8.5 | 8.3 | 8.2 | 8.0 | 8.1 | 8.2 | 8.4 | 8.5 | 8.4 | 8.5 | 8.6 | 8.5 | 8.1 | 40 |
| 42 | 9.1 | 8.3 | 8.0 | 7.8 | 7.7 | 7.8 | 7.8 | 8.1 | 8.2 | 8.2 | 8.2 | 8.3 | 8.0 | 7.7 | 42 |
| 44 | 8.8 | 8.0 | 7.6 | 7.3 | 7.3 | 7.5 | 7.6 | 7.8 | 7.9 | 7.9 | 7.9 | 7.8 | 7.5 | 7.2 | 44 |
| 46 | | 7.6 | 7.1 | 6.9 | 7.0 | 7.2 | 7.4 | 7.6 | 7.6 | 7.5 | 7.4 | 7.2 | 6.9 | 6.6 | 46 |
| 48 | | | 6.7 | 6.4 | 6.7 | 7.0 | 7.2 | 7.3 | 7.2 | 7.0 | 6.9 | 6.7 | 6.4 | 6.1 | 48 |
| 50 | | | | 6.1 | 6.5 | 6.9 | 6.9 | 6.9 | 6.7 | 6.5 | 6.4 | 6.2 | 5.9 | 5.7 | 50 |
| 52 | | | | | 6.4 | 6.7 | 6.6 | 6.5 | 6.3 | 6.1 | 5.9 | 5.8 | 5.5 | 5.2 | 52 |
| 54 | | | | | 6.3 | 6.5 | 6.2 | 6.0 | 5.9 | 5.7 | 5.5 | 5.3 | 5.1 | 4.8 | 54 |
| 56 | | | | | | 6.1 | 5.9 | 5.7 | 5.5 | 5.3 | 5.1 | 4.9 | 4.7 | 4.5 | 56 |
| 58 | | | | | | | 5.5 | 5.3 | 5.1 | 4.9 | 4.7 | 4.6 | 4.3 | 4.1 | 58 |
| 60 | | | | | | | | 5.0 | 4.8 | 4.6 | 4.4 | 4.2 | 4.0 | 3.8 | 60 |
| 62 | | | | | | | | 4.7 | 4.5 | 4.3 | 4.1 | 3.9 | 3.7 | 3.5 | 62 |
| 64 | | | | | | | | | 4.2 | 4.0 | 3.8 | 3.6 | 3.4 | 3.2 | 64 |
| 66 | | | | | | | | | | | 3.6 | 3.4 | 3.1 | 2.9 | 66 |
| 68 | | | | | | | | | | | 3.2 | 3.0 | 2.8 | 2.6 | 68 |
| 70 | | | | | | | | | | | 3.0 | 2.8 | 2.6 | 2.3 | 70 |
| 72 | | | | | | | | | | | | 2.5 | 2.3 | 2.1 | 72 |
| 74 | | | | | | | | | | | | | 2.1 | | 74 |
| Counterweight | 54+20 | | | | | | | | | | | | | | Counterweight |
| Parts of line | 2 | 1 | 1 | 1 | 1 | 1 | 1 | 1 | 1 | 1 | 1 | 1 | 1 | 1 | Parts of line |

Unit: t

FJ Load Chart

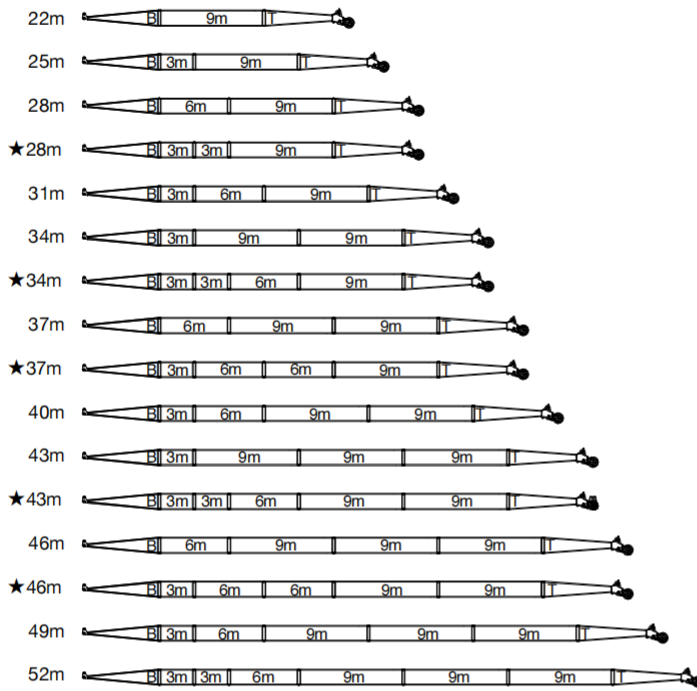
| Load chart -FJ (Load on aux. hook, Boom 22~61m, Without main hook) 3/4 | | | | | | | | | | | | | | | |
|---|-------|------|------|------|------|------|------|------|------|------|------|------|------|------|----------------------------------|
| Jib 13m, Boom to jib angle 30° | | | | | | | | | | | | | | | |
| Boom length (m) Radius (m) | 22 | 25 | 28 | 31 | 34 | 37 | 40 | 43 | 46 | 49 | 52 | 55 | 58 | 61 | Boom length (m) Radius (m) |
| 12 | 23.5 | 23.1 | | | | | | | | | | | | | 12 |
| 14 | 22.7 | 22.3 | 22.1 | 21.9 | 21.8 | | | | | | | | | | 14 |
| 16 | 21.8 | 21.5 | 21.4 | 21.3 | 21.2 | 21.1 | 21.0 | 20.9 | | | | | | | 16 |
| 18 | 20.5 | 20.2 | 20.1 | 20.1 | 20.0 | 19.9 | 19.8 | 19.7 | 19.6 | 19.5 | 19.4 | 19.3 | | | 18 |
| 20 | 19.6 | 19.3 | 19.2 | 19.1 | 18.9 | 18.8 | 18.7 | 18.6 | 18.5 | 18.4 | 18.3 | 18.2 | 18.1 | 17.6 | 20 |
| 22 | 18.7 | 18.4 | 18.1 | 17.9 | 17.8 | 17.6 | 17.5 | 17.4 | 17.3 | 17.2 | 17.1 | 17.0 | 16.9 | 16.6 | 22 |
| 24 | 17.9 | 17.6 | 17.3 | 17.1 | 16.9 | 16.8 | 16.7 | 16.6 | 16.5 | 16.4 | 16.2 | 16.1 | 15.9 | 15.7 | 24 |
| 26 | 17.2 | 16.8 | 16.5 | 16.3 | 16.1 | 16.0 | 15.8 | 15.7 | 15.6 | 15.5 | 15.3 | 15.2 | 14.8 | 14.4 | 26 |
| 28 | 16.5 | 16.1 | 15.8 | 15.6 | 15.5 | 15.4 | 15.2 | 15.1 | 15.0 | 14.9 | 14.5 | 14.0 | 13.6 | 13.2 | 28 |
| 30 | 15.7 | 15.3 | 15.0 | 14.9 | 14.8 | 14.6 | 14.4 | 14.3 | 14.2 | 13.8 | 13.4 | 13.0 | 12.6 | 12.2 | 30 |
| 32 | 14.5 | 14.0 | 14.2 | 14.0 | 13.9 | 13.8 | 13.6 | 13.4 | 13.3 | 12.8 | 12.5 | 12.1 | 11.7 | 11.3 | 32 |
| 34 | | 13.1 | 13.0 | 12.9 | 12.7 | 12.7 | 12.5 | 12.3 | 12.2 | 12.0 | 11.6 | 11.2 | 10.9 | 10.5 | 34 |
| 36 | | 12.2 | 12.1 | 11.9 | 11.8 | 11.7 | 11.5 | 11.3 | 11.2 | 11.0 | 10.9 | 10.7 | 10.1 | 9.8 | 36 |
| 38 | | | 11.2 | 11.0 | 10.9 | 10.9 | 10.6 | 10.4 | 10.3 | 10.1 | 10.0 | 9.8 | 9.7 | 9.1 | 38 |
| 40 | | | | 10.2 | 10.1 | 10.1 | 9.8 | 9.7 | 9.5 | 9.3 | 9.2 | 9.1 | 8.9 | 8.7 | 40 |
| 42 | | | | | 9.4 | 9.4 | 9.1 | 8.9 | 8.8 | 8.6 | 8.5 | 8.3 | 8.2 | 8.0 | 42 |
| 44 | | | | | 8.7 | 8.7 | 8.5 | 8.3 | 8.2 | 8.0 | 7.8 | 7.7 | 7.5 | 7.4 | 44 |
| 46 | | | | | | 8.1 | 7.9 | 7.7 | 7.6 | 7.4 | 7.3 | 7.1 | 6.9 | 6.8 | 46 |
| 48 | | | | | | | 7.3 | 7.2 | 7.0 | 6.9 | 6.7 | 6.6 | 6.4 | 6.2 | 48 |
| 50 | | | | | | | | 6.7 | 6.5 | 6.4 | 6.2 | 6.0 | 5.9 | 5.7 | 50 |
| 52 | | | | | | | | | 6.1 | 5.9 | 5.7 | 5.6 | 5.4 | 5.2 | 52 |
| 54 | | | | | | | | | 5.6 | 5.4 | 5.3 | 5.1 | 4.9 | 4.7 | 54 |
| 56 | | | | | | | | | | 5.0 | 4.8 | 4.7 | 4.5 | 4.3 | 56 |
| 58 | | | | | | | | | | | 4.4 | 4.3 | 4.1 | 3.9 | 58 |
| 60 | | | | | | | | | | | | 3.9 | 3.7 | 3.6 | 60 |
| 62 | | | | | | | | | | | | | 3.6 | 3.4 | 62 |
| 64 | | | | | | | | | | | | | | 3.0 | 64 |
| 66 | | | | | | | | | | | | | | | 66 |
| Counterweight | 54+20 | | | | | | | | | | | | | | Counterweight |
| Parts of line | 2 | 2 | 2 | 2 | 2 | 2 | 2 | 2 | 2 | 2 | 2 | 2 | 2 | 2 | Parts of line |

FJ Load Chart

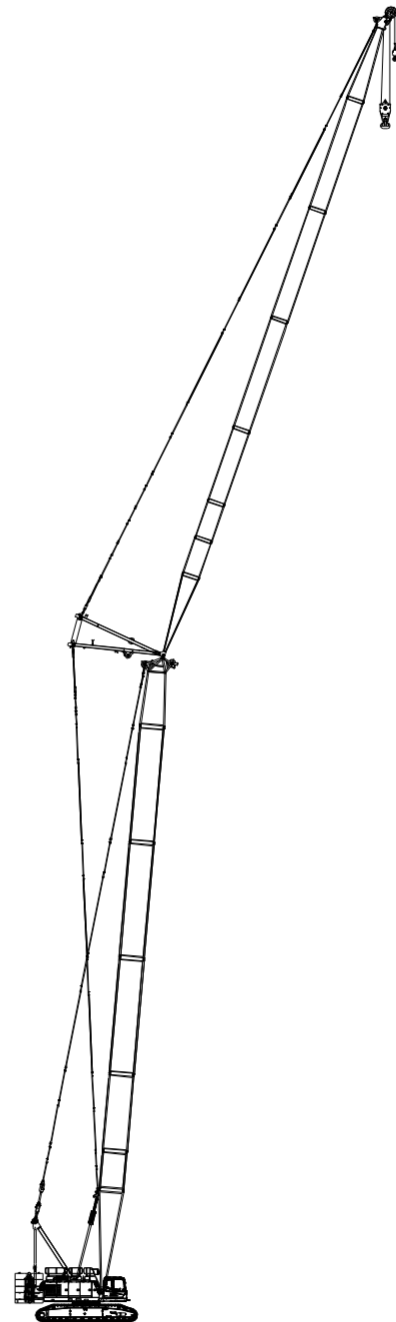
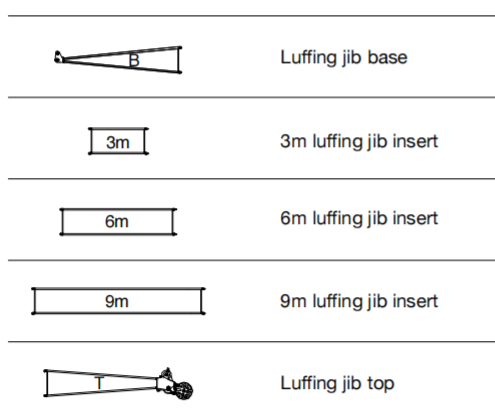
Load chart -FJ (Load on aux. hook, Boom 22~61m, Without main hook) 4/4

| Jib 25m, Boom to jib angle 30° | | | | | | | | | | | | | | | |
|--------------------------------|-------|-----|-----|-----|-----|-----|-----|-----|-----|-----|-----|-----|-----|-----|-------------------------------|
| Boom length (m) Radius (m) | 22 | 25 | 28 | 31 | 34 | 37 | 40 | 43 | 46 | 49 | 52 | 55 | 58 | 61 | Boom length (m) Radius (m) |
| 20 | 9.8 | 9.8 | | | | | | | | | | | | | 20 |
| 22 | 9.5 | 9.5 | 9.5 | 9.4 | 9.4 | | | | | | | | | | 22 |
| 24 | 9.2 | 9.2 | 9.3 | 9.1 | 9.2 | 9.2 | 9.2 | 9.1 | | | | | | | 24 |
| 26 | 8.9 | 8.9 | 9.0 | 8.8 | 9.0 | 9.0 | 9.0 | 8.8 | 8.7 | 8.6 | 8.5 | 8.4 | | | 26 |
| 28 | 8.6 | 8.6 | 8.7 | 8.6 | 8.8 | 8.7 | 8.6 | 8.5 | 8.4 | 8.3 | 8.2 | 8.1 | 8.0 | 7.8 | 28 |
| 30 | 8.3 | 8.3 | 8.4 | 8.4 | 8.5 | 8.4 | 8.3 | 8.2 | 8.2 | 8.1 | 8.0 | 7.9 | 7.8 | 7.7 | 30 |
| 32 | 8.0 | 8.0 | 8.1 | 8.2 | 8.2 | 8.2 | 8.0 | 8.0 | 7.9 | 7.8 | 7.7 | 7.6 | 7.6 | 7.4 | 32 |
| 34 | 7.7 | 7.7 | 7.8 | 8.0 | 8.0 | 7.9 | 7.8 | 7.7 | 7.7 | 7.6 | 7.5 | 7.4 | 7.4 | 7.2 | 34 |
| 36 | 7.4 | 7.5 | 7.6 | 7.7 | 7.7 | 7.6 | 7.5 | 7.5 | 7.4 | 7.4 | 7.3 | 7.2 | 7.2 | 7.0 | 36 |
| 38 | 7.2 | 7.2 | 7.3 | 7.5 | 7.4 | 7.4 | 7.3 | 7.3 | 7.2 | 7.2 | 7.1 | 7.0 | 6.9 | 6.8 | 38 |
| 40 | 7.0 | 7.0 | 7.1 | 7.3 | 7.2 | 7.1 | 7.2 | 7.1 | 7.0 | 7.0 | 6.9 | 6.9 | 6.8 | 6.6 | 40 |
| 42 | 6.8 | 6.8 | 6.9 | 7.1 | 7.0 | 6.9 | 6.9 | 7.0 | 6.9 | 6.9 | 6.8 | 6.8 | 6.7 | 6.4 | 42 |
| 44 | 6.6 | 6.6 | 6.7 | 6.8 | 6.7 | 6.7 | 6.7 | 6.8 | 6.8 | 6.8 | 6.7 | 6.7 | 6.6 | 6.2 | 44 |
| 46 | | 6.4 | 6.4 | 6.4 | 6.4 | 6.5 | 6.5 | 6.6 | 6.7 | 6.7 | 6.6 | 6.6 | 6.5 | 6.1 | 46 |
| 48 | | 6.2 | 6.1 | 6.0 | 6.1 | 6.3 | 6.4 | 6.5 | 6.6 | 6.6 | 6.5 | 6.5 | 6.4 | 6.0 | 48 |
| 50 | | | 5.9 | 5.6 | 5.8 | 6.1 | 6.3 | 6.4 | 6.5 | 6.5 | 6.4 | 6.3 | 6.2 | 5.9 | 50 |
| 52 | | | | 5.3 | 5.5 | 5.9 | 6.2 | 6.2 | 6.3 | 6.3 | 6.2 | 6.1 | 6.0 | 5.7 | 52 |
| 54 | | | | | 5.2 | 5.7 | 6.1 | 6.0 | 6.1 | 6.0 | 5.9 | 5.8 | 5.6 | 5.4 | 54 |
| 56 | | | | | 5.0 | 5.5 | 5.9 | 5.8 | 5.8 | 5.6 | 5.5 | 5.4 | 5.2 | 5.0 | 56 |
| 58 | | | | | | 5.3 | 5.6 | 5.5 | 5.4 | 5.2 | 5.1 | 4.9 | 4.8 | 4.6 | 58 |
| 60 | | | | | | | 5.3 | 5.2 | 5.0 | 4.9 | 4.7 | 4.5 | 4.4 | 4.2 | 60 |
| 62 | | | | | | | | | 4.6 | 4.6 | 4.4 | 4.2 | 4.1 | 3.8 | 62 |
| 64 | | | | | | | | | 4.2 | 4.2 | 4.0 | 3.8 | 3.7 | 3.5 | 64 |
| 66 | | | | | | | | | 4.0 | 3.8 | 3.6 | 3.4 | 3.3 | 3.1 | 66 |
| 68 | | | | | | | | | | 3.4 | 3.4 | 3.1 | 3.0 | 2.9 | 68 |
| 70 | | | | | | | | | | | | 2.9 | 2.8 | 2.7 | 70 |
| 72 | | | | | | | | | | | | 2.6 | 2.5 | 2.4 | 72 |
| 74 | | | | | | | | | | | | 2.3 | | | 74 |
| Counterweight | 54+20 | | | | | | | | | | | | | | Counterweight |
| Parts of line | 1 | 1 | 1 | 1 | 1 | 1 | 1 | 1 | 1 | 1 | 1 | 1 | 1 | 1 | Parts of line |

LJ Configuration

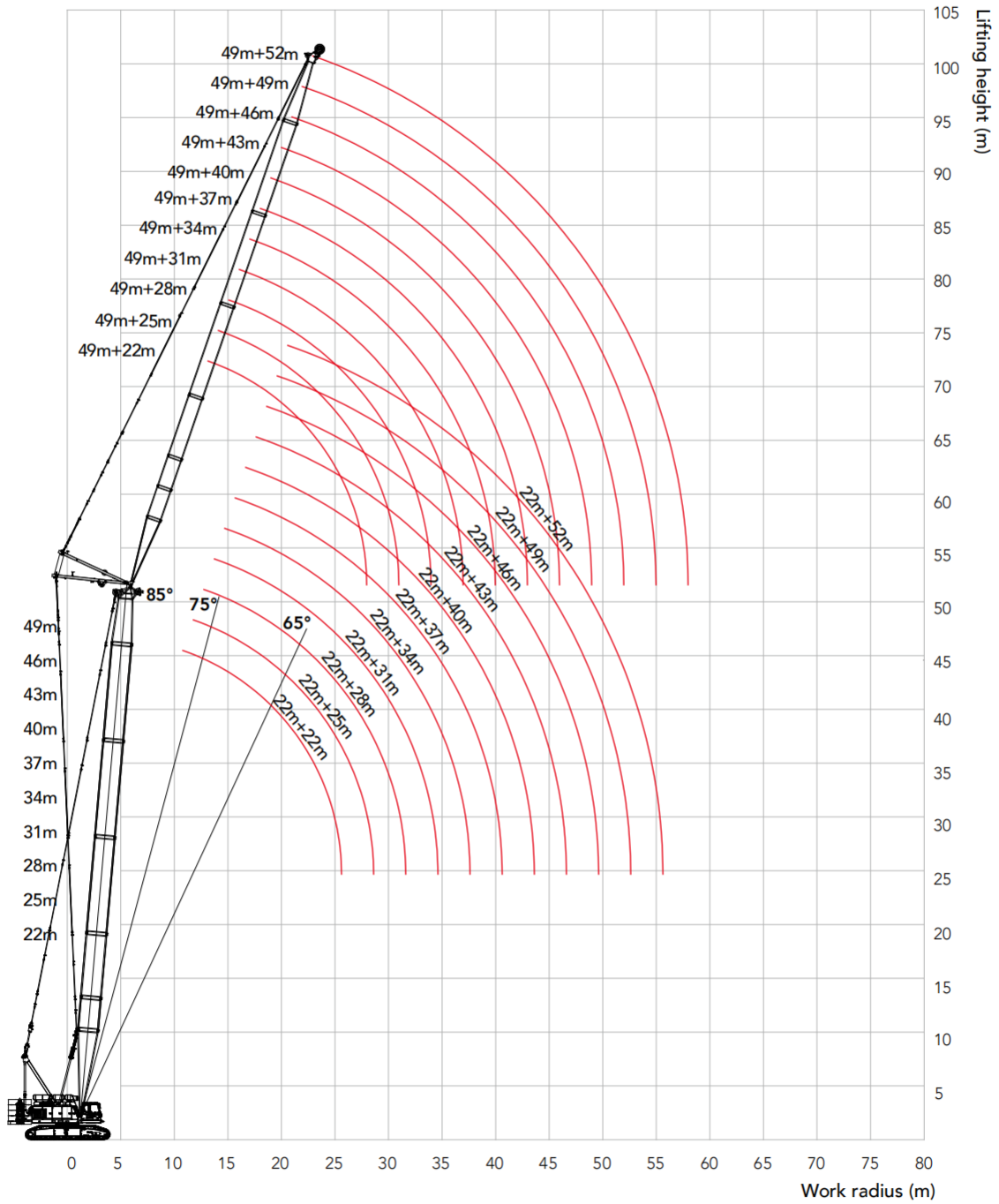


Note: The boom combinations with " ★ " are recommended for purchasing.



LJ Configuration:
(49m+52m)

LJ Working Radius



Unit: t

LJ Load Chart

Note:

- 1.The rated load in the load chart is calculated complying with EN 13000;
- 2.The working radius is the horizontal distance from the load center to the swing center;
- 3.The actual lifting capacity must subtract the weight of hooks and other riggings from the rated capacity in the load chart.
- 4.The load value is calculated when the object is hung freely,without considering the influence of wind on the load, ground conditions and slope, operation speed and the influence of any other negative factors over safe operation. Therefore, the operator bears the responsibility of making a judgement and decreasing the load and lowering speed.
5. All ratings are calculated when the machine is parking on firm and level ground with less than 1% gradient.
6. See the Operation Manual for the complete load charts of LJ and LJa configurations.

Load chart -LJ (Load on luffing jib hook, Without extension jib) 1/12

| Boom 22m, Boom angle 85° | | | | | | | | | | | | |
|----------------------------------|-------|------|------|------|------|------|------|------|------|-----|-----|----------------------------------|
| Boom length (m) Radius (m) | 22 | 25 | 28 | 31 | 34 | 37 | 40 | 43 | 46 | 49 | 52 | Boom length (m) Radius (m) |
| 10 | 40.0 | | | | | | | | | | | 10 |
| 12 | 37.6 | 33.8 | 29.9 | 26.7 | | | | | | | | 12 |
| 14 | 34.5 | 31.2 | 27.9 | 24.9 | 21.8 | 18.4 | | | | | | 14 |
| 16 | 30.1 | 28.9 | 26.0 | 23.3 | 21.3 | 17.9 | 15.1 | 12.8 | 11.0 | | | 16 |
| 18 | 25.1 | 25.3 | 23.9 | 21.7 | 20.3 | 17.4 | 14.7 | 12.4 | 10.6 | 9.1 | 7.7 | 18 |
| 20 | 21.5 | 21.6 | 21.8 | 20.2 | 18.8 | 17.0 | 14.2 | 12.0 | 10.2 | 8.7 | 7.4 | 20 |
| 22 | 18.7 | 18.8 | 18.9 | 18.7 | 17.4 | 16.1 | 13.8 | 11.6 | 9.9 | 8.4 | 7.1 | 22 |
| 24 | 14.8 | 16.5 | 16.6 | 16.5 | 16.0 | 14.9 | 13.4 | 11.3 | 9.5 | 8.1 | 6.8 | 24 |
| 26 | | 14.1 | 14.8 | 14.7 | 14.8 | 13.7 | 12.6 | 11.0 | 9.2 | 7.8 | 6.6 | 26 |
| 28 | | | 13.2 | 13.2 | 13.2 | 12.7 | 11.7 | 10.6 | 8.9 | 7.5 | 6.3 | 28 |
| 30 | | | 10.3 | 11.9 | 11.9 | 11.6 | 10.8 | 9.8 | 8.6 | 7.2 | 6.0 | 30 |
| 32 | | | | 10.1 | 10.8 | 10.8 | 9.9 | 9.1 | 8.2 | 6.9 | 5.8 | 32 |
| 34 | | | | | 9.7 | 9.8 | 9.1 | 8.3 | 7.6 | 6.7 | 5.6 | 34 |
| 36 | | | | | 7.7 | 8.9 | 8.4 | 7.7 | 6.9 | 6.2 | 5.3 | 36 |
| 38 | | | | | | 7.5 | 7.6 | 7.0 | 6.4 | 5.7 | 5.0 | 38 |
| 40 | | | | | | | 7.0 | 6.4 | 5.8 | 5.2 | 4.5 | 40 |
| 42 | | | | | | | 5.8 | 5.8 | 5.3 | 4.7 | 4.1 | 42 |
| 44 | | | | | | | | 5.3 | 4.8 | 4.2 | 3.7 | 44 |
| 46 | | | | | | | | | 4.3 | 3.8 | 3.3 | 46 |
| 48 | | | | | | | | | 3.9 | 3.4 | 2.9 | 48 |
| 50 | | | | | | | | | | 3.1 | 2.6 | 50 |
| 52 | | | | | | | | | | | 2.2 | 52 |
| Counterweight | 54+20 | | | | | | | | | | | Counterweight |
| Parts of line | 4 | 3 | 3 | 3 | 2 | 2 | 2 | 1 | 1 | 1 | 1 | Parts of line |

LJ Load Chart**Load chart -LJ (Load on luffing jib hook, Without extension jib) 2/12**

| Load chart -LJ (Load on luffing jib hook, Without extension jib) 2/12 | | | | | | | | | | | | |
|--|-------|------|------|------|------|------|------|------|------|-----|-----|----------------------------------|
| Boom 31m, Boom angle 85° | | | | | | | | | | | | |
| Boom length (m) Radius (m) | 22 | 25 | 28 | 31 | 34 | 37 | 40 | 43 | 46 | 49 | 52 | Boom length (m) Radius (m) |
| 12 | 37.1 | 33.3 | 28.8 | | | | | | | | | 12 |
| 14 | 32.1 | 31.1 | 27.6 | 23.9 | 20.2 | | | | | | | 14 |
| 16 | 27.6 | 27.5 | 26.0 | 23.2 | 19.8 | 16.8 | 14.3 | 12.2 | | | | 16 |
| 18 | 24.3 | 24.2 | 24.1 | 21.8 | 19.4 | 16.4 | 13.9 | 11.9 | 10.2 | 8.7 | | 18 |
| 20 | 21.7 | 21.6 | 21.3 | 20.6 | 18.9 | 16.1 | 13.6 | 11.6 | 9.9 | 8.4 | 7.2 | 20 |
| 22 | 19.5 | 19.4 | 19.2 | 19.1 | 17.6 | 15.7 | 13.2 | 11.2 | 9.6 | 8.1 | 6.9 | 22 |
| 24 | 17.7 | 17.6 | 17.4 | 17.3 | 16.4 | 15.1 | 12.9 | 10.9 | 9.3 | 7.9 | 6.7 | 24 |
| 26 | | 16.0 | 15.9 | 15.6 | 15.0 | 14.1 | 12.6 | 10.6 | 9.0 | 7.6 | 6.4 | 26 |
| 28 | | 13.3 | 14.2 | 14.0 | 13.6 | 13.0 | 12.1 | 10.3 | 8.7 | 7.3 | 6.2 | 28 |
| 30 | | | 12.4 | 12.4 | 12.3 | 11.9 | 11.2 | 10.1 | 8.4 | 7.1 | 5.9 | 30 |
| 32 | | | | 11.0 | 11.0 | 10.9 | 10.4 | 9.4 | 8.2 | 6.8 | 5.7 | 32 |
| 34 | | | | 9.8 | 9.9 | 9.9 | 9.6 | 8.8 | 7.9 | 6.6 | 5.5 | 34 |
| 36 | | | | | 8.9 | 9.0 | 8.8 | 8.0 | 7.3 | 6.4 | 5.3 | 36 |
| 38 | | | | | | 8.0 | 8.0 | 7.4 | 6.7 | 6.0 | 5.1 | 38 |
| 40 | | | | | | 7.2 | 7.3 | 6.8 | 6.2 | 5.5 | 4.8 | 40 |
| 42 | | | | | | | 6.6 | 6.2 | 5.7 | 5.0 | 4.3 | 42 |
| 44 | | | | | | | | 5.7 | 5.2 | 4.6 | 3.9 | 44 |
| 46 | | | | | | | | | 4.7 | 4.2 | 3.5 | 46 |
| 48 | | | | | | | | | 4.2 | 3.7 | 3.2 | 48 |
| 50 | | | | | | | | | | 3.3 | 2.8 | 50 |
| 52 | | | | | | | | | | | 2.5 | 52 |
| 54 | | | | | | | | | | | 2.1 | 54 |
| Counterweight | 54+20 | | | | | | | | | | | Counterweight |
| Parts of line | 4 | 3 | 3 | 2 | 2 | 2 | 2 | 2 | 1 | 1 | 1 | Parts of line |

Unit: t

LJ Load Chart

| Load chart -LJ (Load on luffing jib hook, Without extension jib) 3/12 | | | | | | | | | | | | |
|--|-------|------|------|------|------|------|------|------|-----|-----|-----|----------------------------------|
| Boom 40m, Boom angle 85° | | | | | | | | | | | | |
| Boom length (m) Radius (m) | 22 | 25 | 28 | 31 | 34 | 37 | 40 | 43 | 46 | 49 | 52 | Boom length (m) Radius (m) |
| 12 | 32.0 | 28.5 | | | | | | | | | | 12 |
| 14 | 28.8 | 27.0 | 24.3 | 21.1 | | | | | | | | 14 |
| 16 | 25.1 | 24.7 | 23.0 | 20.7 | 17.8 | 15.3 | 13.2 | | | | | 16 |
| 18 | 21.9 | 21.8 | 21.5 | 19.6 | 17.5 | 15.0 | 12.9 | 11.1 | 9.6 | | | 18 |
| 20 | 19.7 | 19.4 | 19.3 | 18.2 | 16.8 | 14.7 | 12.6 | 10.8 | 9.3 | 8.0 | 6.8 | 20 |
| 22 | 17.8 | 17.5 | 17.3 | 16.9 | 15.7 | 14.5 | 12.4 | 10.6 | 9.1 | 7.7 | 6.6 | 22 |
| 24 | 16.0 | 15.9 | 15.7 | 15.5 | 14.6 | 13.6 | 12.1 | 10.3 | 8.8 | 7.5 | 6.4 | 24 |
| 26 | 14.6 | 14.4 | 14.3 | 14.2 | 13.5 | 12.7 | 11.8 | 10.1 | 8.6 | 7.3 | 6.2 | 26 |
| 28 | | 13.2 | 13.0 | 12.8 | 12.4 | 11.8 | 11.0 | 9.8 | 8.3 | 7.1 | 6.0 | 28 |
| 30 | | | 11.7 | 11.5 | 11.3 | 10.9 | 10.3 | 9.6 | 8.1 | 6.8 | 5.8 | 30 |
| 32 | | | 10.3 | 10.4 | 10.2 | 10.0 | 9.6 | 9.0 | 7.9 | 6.6 | 5.6 | 32 |
| 34 | | | | 9.2 | 9.3 | 9.1 | 8.8 | 8.4 | 7.7 | 6.4 | 5.4 | 34 |
| 36 | | | | | 8.4 | 8.3 | 8.1 | 7.8 | 7.4 | 6.2 | 5.2 | 36 |
| 38 | | | | | 7.5 | 7.6 | 7.4 | 7.3 | 6.9 | 6.1 | 5.0 | 38 |
| 40 | | | | | | 6.8 | 6.8 | 6.7 | 6.4 | 5.7 | 4.8 | 40 |
| 42 | | | | | | | 6.2 | 6.2 | 5.9 | 5.2 | 4.5 | 42 |
| 44 | | | | | | | | 5.6 | 5.4 | 4.7 | 4.1 | 44 |
| 46 | | | | | | | | 5.1 | 5.0 | 4.3 | 3.7 | 46 |
| 48 | | | | | | | | | 4.4 | 3.9 | 3.3 | 48 |
| 50 | | | | | | | | | | 3.5 | 3.0 | 50 |
| 52 | | | | | | | | | | 3.2 | 2.7 | 52 |
| 54 | | | | | | | | | | | 2.3 | 54 |
| Counterweight | 54+20 | | | | | | | | | | | Counterweight |
| Parts of line | 3 | 3 | 3 | 2 | 2 | 2 | 2 | 1 | 1 | 1 | 1 | Parts of line |

LJ Load Chart**Load chart -LJ (Load on luffing jib hook, Without extension jib) 4/12**

| Load chart -LJ (Load on luffing jib hook, Without extension jib) 4/12 | | | | | | | | | | | | |
|--|-------|------|------|------|------|------|------|------|-----|-----|-----|----------------------------------|
| Boom 49m, Boom angle 85° | | | | | | | | | | | | |
| Boom length (m) Radius (m) | 22 | 25 | 28 | 31 | 34 | 37 | 40 | 43 | 46 | 49 | 52 | Boom length (m) Radius (m) |
| 14 | 24.4 | 22.3 | 20.3 | | | | | | | | | 14 |
| 16 | 22.7 | 21.0 | 19.3 | 17.5 | 15.4 | 13.4 | | | | | | 16 |
| 18 | 20.1 | 19.5 | 18.2 | 16.7 | 15.1 | 13.2 | 11.5 | 10.0 | | | | 18 |
| 20 | 18.0 | 17.9 | 16.9 | 15.8 | 14.5 | 13.0 | 11.3 | 9.8 | 8.5 | 7.4 | 6.4 | 20 |
| 22 | 16.3 | 16.1 | 15.7 | 14.6 | 13.7 | 12.6 | 11.1 | 9.6 | 8.3 | 7.2 | 6.2 | 22 |
| 24 | 14.7 | 14.5 | 14.4 | 13.5 | 12.8 | 12.0 | 10.8 | 9.4 | 8.1 | 7.0 | 6.0 | 24 |
| 26 | 13.5 | 13.3 | 13.1 | 12.4 | 11.9 | 11.2 | 10.4 | 9.2 | 7.9 | 6.8 | 5.8 | 26 |
| 28 | | 12.1 | 11.9 | 11.5 | 11.0 | 10.5 | 9.8 | 9.0 | 7.7 | 6.6 | 5.6 | 28 |
| 30 | | 10.9 | 10.7 | 10.4 | 10.1 | 9.7 | 9.2 | 8.6 | 7.5 | 6.4 | 5.4 | 30 |
| 32 | | | 9.7 | 9.5 | 9.3 | 9.0 | 8.6 | 8.1 | 7.4 | 6.2 | 5.3 | 32 |
| 34 | | | | 8.6 | 8.5 | 8.3 | 8.0 | 7.6 | 7.1 | 6.1 | 5.1 | 34 |
| 36 | | | | | 7.7 | 7.6 | 7.4 | 7.1 | 6.7 | 5.9 | 4.9 | 36 |
| 38 | | | | | 7.0 | 7.0 | 6.8 | 6.6 | 6.3 | 5.7 | 4.8 | 38 |
| 40 | | | | | | 6.4 | 6.3 | 6.1 | 5.9 | 5.6 | 4.6 | 40 |
| 42 | | | | | | | 5.7 | 5.6 | 5.5 | 5.2 | 4.5 | 42 |
| 44 | | | | | | | 5.3 | 5.2 | 5.1 | 4.9 | 4.2 | 44 |
| 46 | | | | | | | | 4.8 | 4.7 | 4.5 | 3.9 | 46 |
| 48 | | | | | | | | | 4.3 | 4.1 | 3.5 | 48 |
| 50 | | | | | | | | | 4.0 | 3.7 | 3.1 | 50 |
| 52 | | | | | | | | | | 3.3 | 2.8 | 52 |
| 54 | | | | | | | | | | | 2.5 | 54 |
| 56 | | | | | | | | | | | 2.2 | 56 |
| Counterweight | 54+20 | | | | | | | | | | | Counterweight |
| Parts of line | 3 | 2 | 2 | 2 | 2 | 2 | 1 | 1 | 1 | 1 | 1 | Parts of line |

Unit: t

LJ Load Chart

| Load chart -LJ (Load on luffing jib hook, Without extension jib) 5/12 | | | | | | | | | | | | |
|--|-------|------|------|------|------|------|------|------|-----|-----|-----|----------------------------------|
| Boom 22m, Boom angle 75° | | | | | | | | | | | | |
| Boom length (m) Radius (m) | 22 | 25 | 28 | 31 | 34 | 37 | 40 | 43 | 46 | 49 | 52 | Boom length (m) Radius (m) |
| 18 | 30.9 | | | | | | | | | | | 18 |
| 20 | 27.3 | 27.3 | 26.0 | | | | | | | | | 20 |
| 22 | 24.5 | 24.4 | 24.3 | 21.9 | | | | | | | | 22 |
| 24 | 22.2 | 22.0 | 22.1 | 20.8 | 18.6 | 15.4 | | | | | | 24 |
| 26 | 20.1 | 20.0 | 20.1 | 19.4 | 17.9 | 15.2 | 12.7 | 10.7 | | | | 26 |
| 28 | 16.9 | 18.2 | 18.3 | 18.1 | 16.6 | 14.9 | 12.4 | 10.4 | 8.8 | | | 28 |
| 30 | | 15.7 | 16.5 | 16.5 | 15.5 | 14.3 | 12.2 | 10.2 | 8.5 | 7.2 | 6.0 | 30 |
| 32 | | | 14.5 | 14.7 | 14.3 | 13.3 | 11.9 | 9.9 | 8.3 | 7.0 | 5.8 | 32 |
| 34 | | | 12.2 | 13.1 | 13.3 | 12.3 | 11.3 | 9.7 | 8.1 | 6.7 | 5.6 | 34 |
| 36 | | | | 11.5 | 12.1 | 11.4 | 10.4 | 9.4 | 7.9 | 6.5 | 5.4 | 36 |
| 38 | | | | | 10.8 | 10.4 | 9.6 | 8.7 | 7.7 | 6.4 | 5.2 | 38 |
| 40 | | | | | 9.1 | 9.5 | 8.8 | 8.1 | 7.3 | 6.2 | 5.1 | 40 |
| 42 | | | | | | 8.7 | 8.1 | 7.4 | 6.7 | 6.0 | 4.9 | 42 |
| 44 | | | | | | | 7.4 | 6.8 | 6.2 | 5.5 | 4.7 | 44 |
| 46 | | | | | | | 6.7 | 6.2 | 5.7 | 5.0 | 4.3 | 46 |
| 48 | | | | | | | | 5.6 | 5.1 | 4.5 | 3.9 | 48 |
| 50 | | | | | | | | | 4.7 | 4.1 | 3.5 | 50 |
| 52 | | | | | | | | | | 3.6 | 3.1 | 52 |
| 54 | | | | | | | | | | 3.3 | 2.8 | 54 |
| 56 | | | | | | | | | | | 2.4 | 56 |
| Counterweight | 54+20 | | | | | | | | | | | Counterweight |
| Parts of line | 3 | 3 | 3 | 2 | 2 | 2 | 2 | 1 | 1 | 1 | 1 | Parts of line |

LJ Load Chart**Load chart -LJ (Load on luffing jib hook, Without extension jib) 6/12**

| Load chart -LJ (Load on luffing jib hook, Without extension jib) 6/12 | | | | | | | | | | | | |
|--|-------|------|------|------|------|------|------|-----|-----|-----|-----|----------------------------------|
| Boom 31m, Boom angle 75° | | | | | | | | | | | | |
| Boom length (m) Radius (m) | 22 | 25 | 28 | 31 | 34 | 37 | 40 | 43 | 46 | 49 | 52 | Boom length (m) Radius (m) |
| 20 | 23.2 | | | | | | | | | | | 20 |
| 22 | 20.8 | 20.5 | 20.5 | | | | | | | | | 22 |
| 24 | 18.8 | 18.4 | 18.3 | 18.4 | | | | | | | | 24 |
| 26 | 17.0 | 16.8 | 16.7 | 16.7 | 16.5 | 14.5 | | | | | | 26 |
| 28 | 15.6 | 15.4 | 15.3 | 15.3 | 15.0 | 14.3 | 12.0 | | | | | 28 |
| 30 | 14.3 | 14.3 | 14.1 | 14.0 | 13.8 | 13.8 | 11.8 | 9.9 | 8.4 | | | 30 |
| 32 | | 13.1 | 13.1 | 12.9 | 12.8 | 12.7 | 11.6 | 9.7 | 8.2 | 6.9 | 5.8 | 32 |
| 34 | | 12.3 | 12.1 | 12.0 | 11.9 | 11.8 | 11.4 | 9.5 | 8.0 | 6.7 | 5.6 | 34 |
| 36 | | | 11.3 | 11.2 | 11.0 | 10.9 | 10.9 | 9.4 | 7.8 | 6.5 | 5.4 | 36 |
| 38 | | | | 10.5 | 10.4 | 10.2 | 10.1 | 9.2 | 7.6 | 6.3 | 5.3 | 38 |
| 40 | | | | | 9.6 | 9.5 | 9.3 | 9.0 | 7.4 | 6.2 | 5.1 | 40 |
| 42 | | | | | 9.1 | 8.9 | 8.8 | 8.3 | 7.3 | 6.0 | 4.9 | 42 |
| 44 | | | | | | 8.4 | 8.2 | 7.6 | 6.9 | 5.9 | 4.8 | 44 |
| 46 | | | | | | | 7.8 | 7.0 | 6.4 | 5.6 | 4.6 | 46 |
| 48 | | | | | | | 7.1 | 6.5 | 5.9 | 5.2 | 4.5 | 48 |
| 50 | | | | | | | | 5.9 | 5.4 | 4.8 | 4.1 | 50 |
| 52 | | | | | | | | | 4.9 | 4.3 | 3.7 | 52 |
| 54 | | | | | | | | | 4.4 | 3.9 | 3.3 | 54 |
| 56 | | | | | | | | | | 3.5 | 2.9 | 56 |
| 58 | | | | | | | | | | | 2.6 | 58 |
| 60 | | | | | | | | | | | 2.3 | 60 |
| Counterweight | 54+20 | | | | | | | | | | | Counterweight |
| Parts of line | 2 | 2 | 2 | 2 | 2 | 2 | 1 | 1 | 1 | 1 | 1 | Parts of line |

Unit: t

LJ Load Chart

| Load chart -LJ (Load on luffing jib hook, Without extension jib) 7/12 | | | | | | | | | | | | |
|--|-------|------|------|------|------|------|------|-----|-----|-----|-----|----------------------------------|
| Boom 40m, Boom angle 75° | | | | | | | | | | | | |
| Boom length (m) Radius (m) | 22 | 25 | 28 | 31 | 34 | 37 | 40 | 43 | 46 | 49 | 52 | Boom length (m) Radius (m) |
| 22 | 18.1 | | | | | | | | | | | 22 |
| 24 | 16.3 | 16.3 | | | | | | | | | | 24 |
| 26 | 14.9 | 14.7 | 14.6 | 14.5 | | | | | | | | 26 |
| 28 | 13.7 | 13.5 | 13.4 | 13.2 | 13.1 | 12.9 | | | | | | 28 |
| 30 | 12.6 | 12.5 | 12.4 | 12.1 | 12.0 | 11.8 | 11.2 | | | | | 30 |
| 32 | 11.7 | 11.5 | 11.4 | 11.3 | 11.1 | 10.9 | 10.7 | 9.3 | 7.9 | | | 32 |
| 34 | | 10.6 | 10.6 | 10.4 | 10.2 | 10.1 | 9.9 | 9.2 | 7.7 | 6.5 | | 34 |
| 36 | | 9.9 | 9.8 | 9.7 | 9.5 | 9.4 | 9.2 | 9.0 | 7.6 | 6.4 | 5.3 | 36 |
| 38 | | | 9.1 | 9.0 | 8.9 | 8.7 | 8.6 | 8.4 | 7.4 | 6.2 | 5.2 | 38 |
| 40 | | | | 8.4 | 8.3 | 8.2 | 8.1 | 7.9 | 7.3 | 6.1 | 5.1 | 40 |
| 42 | | | | 7.9 | 7.8 | 7.6 | 7.5 | 7.4 | 7.2 | 5.9 | 4.9 | 42 |
| 44 | | | | | 7.3 | 7.2 | 7.0 | 6.9 | 6.8 | 5.8 | 4.8 | 44 |
| 46 | | | | | | 6.8 | 6.6 | 6.4 | 6.3 | 5.7 | 4.6 | 46 |
| 48 | | | | | | | 6.3 | 6.1 | 5.9 | 5.5 | 4.5 | 48 |
| 50 | | | | | | | 5.8 | 5.7 | 5.5 | 5.3 | 4.4 | 50 |
| 52 | | | | | | | | 5.4 | 5.3 | 4.8 | 4.1 | 52 |
| 54 | | | | | | | | | 4.9 | 4.4 | 3.8 | 54 |
| 56 | | | | | | | | | 4.6 | 4.0 | 3.4 | 56 |
| 58 | | | | | | | | | | 3.6 | 3.0 | 58 |
| 60 | | | | | | | | | | | 2.7 | 60 |
| 62 | | | | | | | | | | | 2.4 | 62 |
| Counterweight | 54+20 | | | | | | | | | | | Counterweight |
| Parts of line | 2 | 2 | 2 | 2 | 2 | 2 | 1 | 1 | 1 | 1 | 1 | Parts of line |

LJ Load Chart**Load chart -LJ (Load on luffing jib hook, Without extension jib) 8/12**

| Load chart -LJ (Load on luffing jib hook, Without extension jib) 8/12 | | | | | | | | | | | | |
|--|-------|------|------|------|------|-----|-----|-----|-----|-----|-----|----------------------------------|
| Boom 49m, Boom angle 75° | | | | | | | | | | | | |
| Boom length (m) Radius (m) | 22 | 25 | 28 | 31 | 34 | 37 | 40 | 43 | 46 | 49 | 52 | Boom length (m) Radius (m) |
| 24 | 14.5 | | | | | | | | | | | 24 |
| 26 | 13.0 | 12.9 | | | | | | | | | | 26 |
| 28 | 12.0 | 11.9 | 11.6 | 11.5 | | | | | | | | 28 |
| 30 | 11.0 | 10.8 | 10.8 | 10.5 | 10.4 | | | | | | | 30 |
| 32 | 10.2 | 10.0 | 9.9 | 9.7 | 9.5 | 9.4 | 9.2 | | | | | 32 |
| 34 | 9.5 | 9.2 | 9.1 | 9.0 | 8.8 | 8.6 | 8.4 | 8.3 | | | | 34 |
| 36 | | 8.7 | 8.5 | 8.4 | 8.2 | 8.0 | 7.8 | 7.7 | 7.1 | 6.0 | | 36 |
| 38 | | 8.0 | 7.9 | 7.7 | 7.6 | 7.5 | 7.2 | 7.0 | 6.9 | 5.9 | 5.0 | 38 |
| 40 | | | 7.5 | 7.3 | 7.1 | 6.9 | 6.7 | 6.6 | 6.5 | 5.8 | 4.9 | 40 |
| 42 | | | | 6.8 | 6.6 | 6.5 | 6.4 | 6.2 | 6.0 | 5.7 | 4.7 | 42 |
| 44 | | | | 6.3 | 6.2 | 6.1 | 5.9 | 5.7 | 5.6 | 5.4 | 4.6 | 44 |
| 46 | | | | | 5.8 | 5.7 | 5.5 | 5.3 | 5.2 | 5.0 | 4.5 | 46 |
| 48 | | | | | | 5.4 | 5.2 | 5.0 | 4.9 | 4.7 | 4.4 | 48 |
| 50 | | | | | | 5.1 | 4.8 | 4.7 | 4.6 | 4.4 | 4.2 | 50 |
| 52 | | | | | | | 4.6 | 4.4 | 4.3 | 4.2 | 3.9 | 52 |
| 54 | | | | | | | | 4.2 | 4.0 | 3.9 | 3.8 | 54 |
| 56 | | | | | | | | 3.9 | 3.8 | 3.6 | 3.5 | 56 |
| 58 | | | | | | | | | 3.6 | 3.4 | 3.2 | 58 |
| 60 | | | | | | | | | | 3.2 | 3.0 | 60 |
| 62 | | | | | | | | | | | 2.8 | 62 |
| 64 | | | | | | | | | | | 2.4 | 64 |
| Counterweight | 54+20 | | | | | | | | | | | Counterweight |
| Parts of line | 2 | 2 | 1 | 1 | 1 | 1 | 1 | 1 | 1 | 1 | 1 | Parts of line |

Unit: t

LJ Load Chart

Load chart -LJ (Load on luffing jib hook, Without extension jib) 9/12

| Boom 22m, Boom angle 65° | | | | | | | | | | | | |
|------------------------------|-------|------|------|------|------|------|------|-----|-----|-----|-----|------------------------------|
| Boom length (m) / Radius (m) | 22 | 25 | 28 | 31 | 34 | 37 | 40 | 43 | 46 | 49 | 52 | Boom length (m) / Radius (m) |
| 24 | 22.4 | | | | | | | | | | | 24 |
| 26 | 20.3 | 20.2 | | | | | | | | | | 26 |
| 28 | 18.6 | 18.4 | 18.3 | | | | | | | | | 28 |
| 30 | 17.1 | 16.9 | 16.8 | 16.7 | | | | | | | | 30 |
| 32 | 15.8 | 15.7 | 15.6 | 15.4 | 15.3 | | | | | | | 32 |
| 34 | | 14.5 | 14.4 | 14.3 | 14.2 | 13.1 | | | | | | 34 |
| 36 | | | 13.5 | 13.3 | 13.2 | 13.0 | 10.7 | 8.9 | | | | 36 |
| 38 | | | 12.6 | 12.4 | 12.3 | 12.2 | 10.6 | 8.8 | 7.3 | | | 38 |
| 40 | | | | 11.7 | 11.6 | 11.5 | 10.6 | 8.7 | 7.1 | 5.9 | | 40 |
| 42 | | | | | 10.9 | 10.8 | 9.9 | 8.5 | 7.0 | 5.8 | 4.8 | 42 |
| 44 | | | | | 9.8 | 10.0 | 9.1 | 8.2 | 6.9 | 5.7 | 4.6 | 44 |
| 46 | | | | | | 9.2 | 8.4 | 7.6 | 6.8 | 5.5 | 4.5 | 46 |
| 48 | | | | | | | 7.7 | 7.0 | 6.4 | 5.4 | 4.4 | 48 |
| 50 | | | | | | | | 6.4 | 5.8 | 5.1 | | 50 |
| 52 | | | | | | | | 5.9 | 5.3 | | | 52 |
| Counterweight | 54+20 | | | | | | | | | | | Counterweight |
| Parts of line | 2 | 2 | 2 | 2 | 2 | 2 | 1 | 1 | 1 | 1 | 1 | Parts of line |

Load chart -LJ (Load on luffing jib hook, Without extension jib) 10/12

| Boom 31m, Boom angle 65° | | | | | | | | | | | | |
|------------------------------|-------|------|------|------|------|------|-----|-----|-----|-----|-----|------------------------------|
| Boom length (m) / Radius (m) | 22 | 25 | 28 | 31 | 34 | 37 | 40 | 43 | 46 | 49 | 52 | Boom length (m) / Radius (m) |
| 28 | 15.7 | | | | | | | | | | | 28 |
| 30 | 14.4 | 14.3 | | | | | | | | | | 30 |
| 32 | 13.4 | 13.3 | 13.1 | | | | | | | | | 32 |
| 34 | 12.4 | 12.2 | 12.1 | 11.9 | | | | | | | | 34 |
| 36 | 11.5 | 11.4 | 11.3 | 11.1 | 10.9 | | | | | | | 36 |
| 38 | | 10.7 | 10.5 | 10.4 | 10.2 | 10.2 | | | | | | 38 |
| 40 | | | 9.8 | 9.8 | 9.6 | 9.4 | 9.3 | 8.4 | | | | 40 |
| 42 | | | 9.2 | 9.1 | 9.0 | 8.9 | 8.7 | 8.3 | 6.9 | | | 42 |
| 44 | | | | 8.6 | 8.5 | 8.4 | 8.1 | 8.0 | 6.8 | 5.6 | | 44 |
| 46 | | | | | 7.9 | 7.9 | 7.7 | 7.5 | 6.7 | 5.5 | 4.5 | 46 |
| 48 | | | | | | 7.4 | 7.2 | 7.1 | 6.6 | 5.4 | 4.4 | 48 |
| 50 | | | | | | 7.0 | 6.8 | 6.7 | 6.5 | 5.3 | 4.3 | 50 |
| 52 | | | | | | | 6.4 | 6.3 | 6.2 | 5.2 | 4.2 | 52 |
| 54 | | | | | | | | 5.9 | 5.8 | 5.1 | 4.1 | 54 |
| 56 | | | | | | | | 5.6 | 5.4 | 4.8 | 4.0 | 56 |
| 58 | | | | | | | | | 5.0 | 4.4 | 3.7 | 58 |
| 60 | | | | | | | | | | 4.0 | | 60 |
| Counterweight | 54+20 | | | | | | | | | | | Counterweight |
| Parts of line | 2 | 2 | 1 | 1 | 1 | 1 | 1 | 1 | 1 | 1 | 1 | Parts of line |

LJ Load Chart**Load chart -LJ (Load on luffing jib hook, Without extension jib) 11/12**

| Boom 40m, Boom angle 65° | | | | | | | | | | | | |
|----------------------------------|-------|------|-----|-----|-----|-----|-----|-----|-----|-----|-----|----------------------------------|
| Boom length (m) Radius (m) | 22 | 25 | 28 | 31 | 34 | 37 | 40 | 43 | 46 | 49 | 52 | Boom length (m) Radius (m) |
| 32 | 11.4 | | | | | | | | | | | 32 |
| 34 | 10.5 | 10.4 | | | | | | | | | | 34 |
| 36 | 9.7 | 9.7 | 9.5 | | | | | | | | | 36 |
| 38 | 9.1 | 8.9 | 8.9 | 8.6 | | | | | | | | 38 |
| 40 | 8.5 | 8.4 | 8.2 | 8.0 | 7.9 | | | | | | | 40 |
| 42 | | 7.8 | 7.7 | 7.6 | 7.4 | 7.2 | 7.0 | | | | | 42 |
| 44 | | | 7.2 | 7.1 | 6.9 | 6.8 | 6.6 | 6.4 | | | | 44 |
| 46 | | | | 6.7 | 6.5 | 6.3 | 6.2 | 6.0 | 5.9 | | | 46 |
| 48 | | | | 6.3 | 6.1 | 6.0 | 5.8 | 5.6 | 5.5 | 5.3 | | 48 |
| 50 | | | | | 5.8 | 5.7 | 5.4 | 5.3 | 5.1 | 5.0 | 4.3 | 50 |
| 52 | | | | | | 5.3 | 5.1 | 5.0 | 4.8 | 4.6 | 4.2 | 52 |
| 54 | | | | | | 4.9 | 4.8 | 4.6 | 4.5 | 4.3 | 4.1 | 54 |
| 56 | | | | | | | 4.6 | 4.4 | 4.2 | 4.1 | 3.9 | 56 |
| 58 | | | | | | | | 4.2 | 4.0 | 3.9 | | 58 |
| 60 | | | | | | | | 3.9 | 3.8 | | | 60 |
| Counterweight | 54+20 | | | | | | | | | | | Counterweight |
| Parts of line | 1 | 1 | 1 | 1 | 1 | 1 | 1 | 1 | 1 | 1 | 1 | Parts of line |

Load chart -LJ (Load on luffing jib hook, Without extension jib) 12/12

| Boom 49m, Boom angle 65° | | | | | | | | | | | | |
|----------------------------------|-------|-----|-----|-----|-----|-----|-----|-----|-----|----|----|----------------------------------|
| Boom length (m) Radius (m) | 22 | 25 | 28 | 31 | 34 | 37 | 40 | 43 | 46 | 49 | 52 | Boom length (m) Radius (m) |
| 36 | 8.0 | | | | | | | | | | | 36 |
| 38 | 7.6 | 7.4 | | | | | | | | | | 38 |
| 40 | 7.0 | 6.8 | 6.7 | | | | | | | | | 40 |
| 42 | 6.6 | 6.4 | 6.3 | 6.0 | | | | | | | | 42 |
| 44 | | 6.0 | 5.9 | 5.6 | 5.5 | 5.3 | | | | | | 44 |
| 46 | | 5.6 | 5.5 | 5.4 | 5.1 | 4.9 | 4.7 | | | | | 46 |
| 48 | | | 5.2 | 5.0 | 4.9 | 4.6 | 4.4 | 4.2 | | | | 48 |
| 50 | | | | 4.7 | 4.5 | 4.3 | 4.1 | 3.9 | 3.8 | | | 50 |
| 52 | | | | 4.5 | 4.3 | 4.1 | 3.8 | 3.7 | 3.5 | | | 52 |
| 54 | | | | | 3.9 | 3.7 | 3.6 | 3.4 | 3.3 | | | 54 |
| 56 | | | | | | 3.5 | 3.4 | 3.2 | | | | 56 |
| 58 | | | | | | 3.3 | 3.2 | | | | | 58 |
| Counterweight | 54+20 | | | | | | | | | | | Counterweight |
| Parts of line | 1 | 1 | 1 | 1 | 1 | 1 | 1 | 1 | 1 | 1 | 1 | Parts of line |



Zhejiang Sany Equipment Co.,LTD

SANY Crawler Crane Industrial Park, No. 2188 Daishan Road, Wuxing District, Huzhou City,
Zhejiang Province, P. R. China Zip 313028
Consulting sanycrane@sanygroup.com (Crane BU) / crd@sany.com.cn (IHQ)
After-sales Service 0086-400 6098 318

Reminder:

Any change in the technical parameters and configuration due to product modification or upgrade may occur without prior notice.
The machine in the picture may include additional equipment. This brochure is for reference only, and goods in kind shall prevail.
Copyright at SANY. No part of this brochure may be copied or used for any purpose without written approval from SANY.

© Edited in November 2023

